

**OCRL rabbit pAb****Cat#: orb765873 (Manual)**

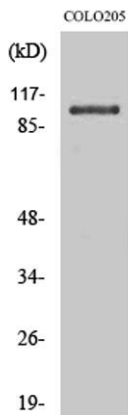
For research use only. Not intended for diagnostic use.

<b>Product Name</b>	OCRL rabbit pAb
<b>Host species</b>	Rabbit
<b>Applications</b>	WB;ELISA
<b>Species Cross-Reactivity</b>	Human;Mouse
<b>Recommended dilutions</b>	Western Blot: 1/500 - 1/2000. ELISA: 1/10000. Not yet tested in other applications.
<b>Immunogen</b>	The antiserum was produced against synthesized peptide derived from human OCRL. AA range:150-199
<b>Specificity</b>	OCRL Polyclonal Antibody detects endogenous levels of OCRL protein.
<b>Formulation</b>	Liquid in PBS containing 50% glycerol, 0.5% BSA and 0.02% sodium azide..
<b>Storage</b>	Store at -20°C. Avoid repeated freeze-thaw cycles.
<b>Protein Name</b>	Inositol polyphosphate 5-phosphatase OCRL-1
<b>Gene Name</b>	OCRL
<b>Cellular localization</b>	Cytoplasmic vesicle, phagosome membrane . Early endosome membrane . Membrane, clathrin-coated pit . Cell projection, cilium, photoreceptor outer segment . Cell projection, cilium . Cytoplasmic vesicle . Endosome . Golgi apparatus, trans-Golgi network . Ly
<b>Purification</b>	The antibody was affinity-purified from rabbit antiserum by affinity-chromatography using epitope-specific immunogen.

<b>Clonality</b>	Polyclonal
<b>Concentration</b>	1 mg/ml
<b>Observed band</b>	104kD
<b>Human Gene ID</b>	4952
<b>Human Swiss-Prot Number</b>	Q01968
<b>Alternative Names</b>	OCRL; INPP5F; OCRL1; Inositol polyphosphate 5-phosphatase OCRL-1; Lowe oculocerebrorenal syndrome protein

**Background**

This gene encodes an inositol polyphosphate 5-phosphatase. This protein is involved in regulating membrane trafficking and is located in numerous subcellular locations including the trans-Golgi network, clathrin-coated vesicles and, endosomes and the plasma membrane. This protein may also play a role in primary cilium formation. Mutations in this gene cause oculocerebrorenal syndrome of Lowe and also Dent disease. Alternate splicing results in multiple transcript variants. [provided by RefSeq, Jan 2016],



**Western Blot analysis of various cells using OCRL Polyclonal Antibody**



Western blot analysis of lysate from COLO205 cells treated with Forskolin, using OCRL antibody.