

NPY5-R rabbit pAb**Cat#: orb765857 (Manual)**

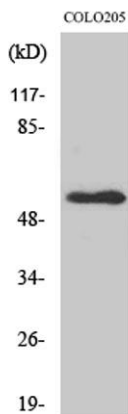
For research use only. Not intended for diagnostic use.

Product Name	NPY5-R rabbit pAb
Host species	Rabbit
Applications	WB;IHC;IF;ELISA
Species Cross-Reactivity	Human;Mouse;Rat
Recommended dilutions	Western Blot: 1/500 - 1/2000. Immunohistochemistry: 1/100 - 1/300. Immunofluorescence: 1/200 - 1/1000. ELISA: 1/20000. Not yet tested in other applications.
Immunogen	The antiserum was produced against synthesized peptide derived from human NPY5R. AA range:221-270
Specificity	NPY5-R Polyclonal Antibody detects endogenous levels of NPY5-R protein.
Formulation	Liquid in PBS containing 50% glycerol, 0.5% BSA and 0.02% sodium azide..
Storage	Store at -20°C. Avoid repeated freeze-thaw cycles.
Protein Name	Neuropeptide Y receptor type 5
Gene Name	NPY5R
Cellular localization	Cell membrane; Multi-pass membrane protein.
Purification	The antibody was affinity-purified from rabbit antiserum by affinity-chromatography using epitope-specific immunogen.
Clonality	Polyclonal

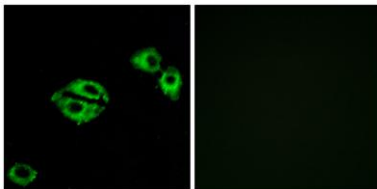
Concentration	1 mg/ml
Observed band	48kD
Human Gene ID	4889
Human Swiss-Prot Number	Q15761
Alternative Names	NPY5R; NPYR5; Neuropeptide Y receptor type 5; NPY5-R; NPY-Y5 receptor; NPYY5-R; Y5 receptor

Background

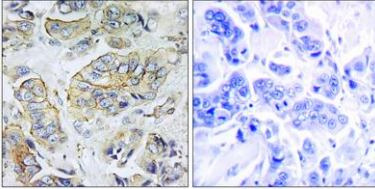
The protein encoded by this gene is a receptor for neuropeptide Y and peptide YY. The encoded protein appears to be involved in regulating food intake, with defects in this gene being associated with eating disorders. Also, the encoded protein is involved in a pathway that protects neuroblastoma cells from chemotherapy-induced cell death, providing a possible therapeutic target against neuroblastoma. Three transcript variants encoding the same protein have been found for this gene. [provided by RefSeq, Nov 2015],



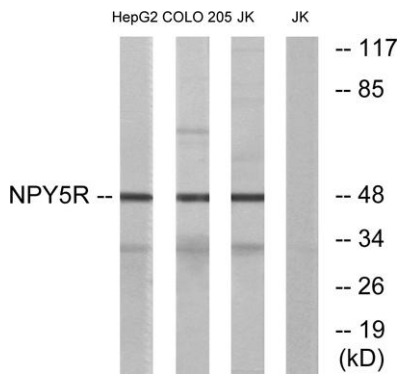
Western Blot analysis of various cells using NPY5-R Polyclonal Antibody



Immunofluorescence analysis of A549 cells, using NPY5R Antibody. The picture on the right is blocked with the synthesized peptide.



Immunohistochemistry analysis of paraffin-embedded human breast carcinoma tissue, using NPY5R Antibody. The picture on the right is blocked with the synthesized peptide.



Western blot analysis of lysates from COLO, Jurkat, and HepG2 cells, using NPY5R Antibody. The lane on the right is blocked with the synthesized peptide.