

NPY2-R rabbit pAb**Cat#: orb765856 (Manual)**

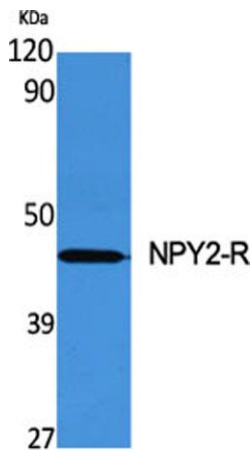
For research use only. Not intended for diagnostic use.

Product Name	NPY2-R rabbit pAb
Host species	Rabbit
Applications	WB;IF;ELISA
Species Cross-Reactivity	Human;Mouse;Rat
Recommended dilutions	Western Blot: 1/500 - 1/2000. Immunofluorescence: 1/200 - 1/1000. ELISA: 1/5000. Not yet tested in other applications.
Immunogen	The antiserum was produced against synthesized peptide derived from human NPY2R. AA range:1-50
Specificity	NPY2-R Polyclonal Antibody detects endogenous levels of NPY2-R protein.
Formulation	Liquid in PBS containing 50% glycerol, 0.5% BSA and 0.02% sodium azide..
Storage	Store at -20°C. Avoid repeated freeze-thaw cycles.
Protein Name	Neuropeptide Y receptor type 2
Gene Name	NPY2R
Cellular localization	Cell membrane; Multi-pass membrane protein.
Purification	The antibody was affinity-purified from rabbit antiserum by affinity-chromatography using epitope-specific immunogen.
Clonality	Polyclonal

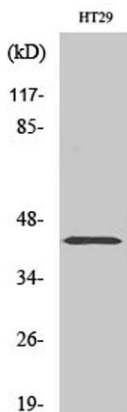
Concentration	1 mg/ml
Observed band	43kD
Human Gene ID	4887
Human Swiss-Prot Number	P49146
Alternative Names	NPY2R; Neuropeptide Y receptor type 2; NPY2-R; NPY-Y2 receptor; Y2 receptor

Background

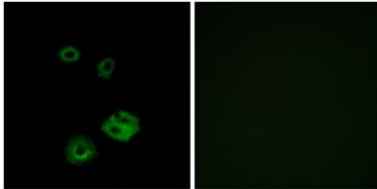
function: Receptor for neuropeptide Y and peptide YY. The rank order of affinity of this receptor for pancreatic polypeptides is PYY > NPY > PYY (3-36) > NPY (2-36) > [Ile-31, Gln-34] PP > [Leu-31, Pro-34] NPY > PP, [Pro-34] PYY and NPY free acid., similarity: Belongs to the G-protein coupled receptor 1 family., tissue specificity: High levels in amygdala, corpus callosum, hippocampus and subthalamic nucleus. Also detectable in caudate nucleus, hypothalamus and substantia nigra.,



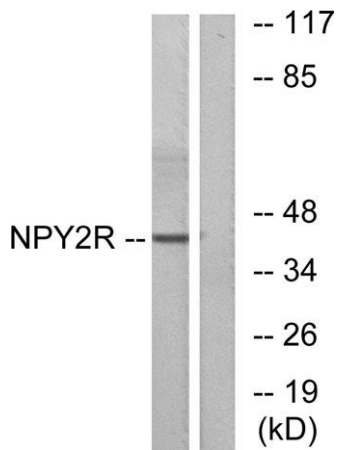
Western Blot analysis of various cells using NPY2-R Polyclonal Antibody diluted at 1:500



Western Blot analysis of HT29 cells using NPY2-R Polyclonal Antibody diluted at 1:500



Immunofluorescence analysis of A549 cells, using NPY2R Antibody. The picture on the right is blocked with the synthesized peptide.



Western blot analysis of lysates from HepG2 cells, using NPY2R Antibody. The lane on the right is blocked with the synthesized peptide.