

**NM23-H1 rabbit pAb****Cat#: orb765844 (Manual)**

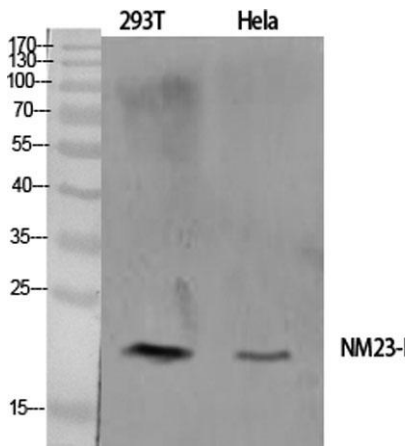
For research use only. Not intended for diagnostic use.

<b>Product Name</b>	NM23-H1 rabbit pAb
<b>Host species</b>	Rabbit
<b>Applications</b>	WB;IHC;IF;ELISA
<b>Species Cross-Reactivity</b>	Human;Mouse;Rat
<b>Recommended dilutions</b>	Western Blot: 1/500 - 1/2000. Immunohistochemistry: 1/100 - 1/300. ELISA: 1/20000. Not yet tested in other applications.
<b>Immunogen</b>	The antiserum was produced against synthesized peptide derived from human NM23-H1. AA range:3-52
<b>Specificity</b>	NM23-H1 Polyclonal Antibody detects endogenous levels of NM23-H1 protein.
<b>Formulation</b>	Liquid in PBS containing 50% glycerol, 0.5% BSA and 0.02% sodium azide..
<b>Storage</b>	Store at -20°C. Avoid repeated freeze-thaw cycles.
<b>Protein Name</b>	Nucleoside diphosphate kinase A
<b>Gene Name</b>	NME1
<b>Cellular localization</b>	Cytoplasm . Nucleus . Cell-cycle dependent nuclear localization which can be induced by interaction with Epstein-barr viral proteins or by degradation of the SET complex by Gzma.
<b>Purification</b>	The antibody was affinity-purified from rabbit antiserum by affinity-chromatography using epitope-specific immunogen.

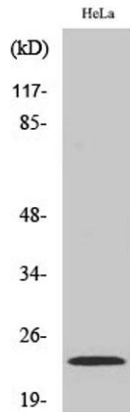
<b>Clonality</b>	Polyclonal
<b>Concentration</b>	1 mg/ml
<b>Observed band</b>	23kD
<b>Human Gene ID</b>	4830
<b>Human Swiss-Prot Number</b>	P15531
<b>Alternative Names</b>	NME1; NDPKA; NM23; Nucleoside diphosphate kinase A; NDK A; NDP kinase A; Granzyme A-activated DNase; GAAD; Metastasis inhibition factor nm23; Tumor metastatic process-associated protein; nm23-H1

**Background**

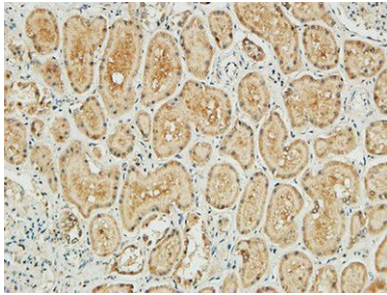
This gene (NME1) was identified because of its reduced mRNA transcript levels in highly metastatic cells. Nucleoside diphosphate kinase (NDK) exists as a hexamer composed of 'A' (encoded by this gene) and 'B' (encoded by NME2) isoforms. Mutations in this gene have been identified in aggressive neuroblastomas. Two transcript variants encoding different isoforms have been found for this gene. Co-transcription of this gene and the neighboring downstream gene (NME2) generates naturally-occurring transcripts (NME1-NME2), which encodes a fusion protein comprised of sequence sharing identity with each individual gene product. [provided by RefSeq, Jul 2008],



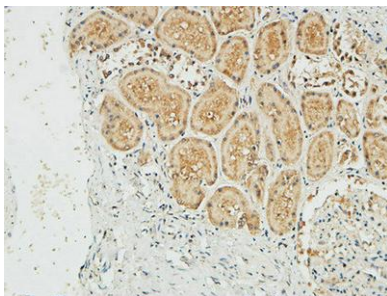
**Western Blot analysis of various cells using NM23-H1 Polyclonal Antibody diluted at 1:1000**



**Western Blot analysis of HeLa cells using NM23-H1 Polyclonal Antibody diluted at 1:1000**



**Immunohistochemical analysis of paraffin-embedded Human kidney. 1, Antibody was diluted at 1:100(4° overnight). 2, High-pressure and temperature EDTA, pH8.0 was used for antigen retrieval. 3,Secondary antibody was diluted at 1:200(room temperature, 30min).**



**Immunohistochemical analysis of paraffin-embedded Human kidney. 1, Antibody was diluted at 1:100(4° overnight). 2, High-pressure and temperature EDTA, pH8.0 was used for antigen retrieval. 3,Secondary antibody was diluted at 1:200(room temperature, 30min).**