

**Neurofibromin rabbit pAb****Cat#: orb765805 (Manual)**

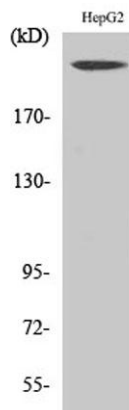
For research use only. Not intended for diagnostic use.

<b>Product Name</b>	Neurofibromin rabbit pAb
<b>Host species</b>	Rabbit
<b>Applications</b>	WB;IHC
<b>Species Cross-Reactivity</b>	Human;Mouse;Rat
<b>Recommended dilutions</b>	WB 1:500-2000;IHC-p 1:50-300
<b>Immunogen</b>	The antiserum was produced against synthesized peptide derived from human NF1. AA range:1551-1600
<b>Specificity</b>	Neurofibromin Polyclonal Antibody detects endogenous levels of Neurofibromin protein.
<b>Formulation</b>	Liquid in PBS containing 50% glycerol, 0.5% BSA and 0.02% sodium azide..
<b>Storage</b>	Store at -20°C. Avoid repeated freeze-thaw cycles.
<b>Protein Name</b>	Neurofibromin
<b>Gene Name</b>	NF1
<b>Cellular localization</b>	Nucleus . Nucleus, nucleolus .
<b>Purification</b>	The antibody was affinity-purified from rabbit antiserum by affinity-chromatography using epitope-specific immunogen.
<b>Clonality</b>	Polyclonal

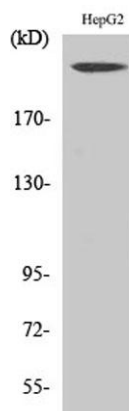
<b>Concentration</b>	1 mg/ml
<b>Observed band</b>	319kD
<b>Human Gene ID</b>	4763
<b>Human Swiss-Prot Number</b>	P21359
<b>Alternative Names</b>	NF1; Neurofibromin; Neurofibromatosis-related protein NF-1

**Background**

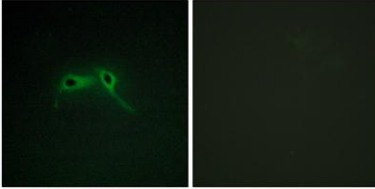
This gene product appears to function as a negative regulator of the ras signal transduction pathway. Mutations in this gene have been linked to neurofibromatosis type 1, juvenile myelomonocytic leukemia and Watson syndrome. The mRNA for this gene is subject to RNA editing (CGA>UGA->Arg1306Term) resulting in premature translation termination. Alternatively spliced transcript variants encoding different isoforms have also been described for this gene. [provided by RefSeq, Jul 2008],



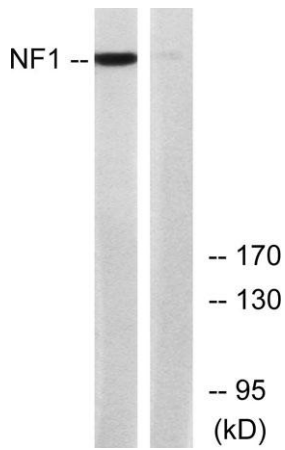
**Western Blot analysis of various cells using Neurofibromin Polyclonal Antibody**



**Western Blot analysis of HepG2 cells using Neurofibromin Polyclonal Antibody**



**Immunofluorescence analysis of HepG2 cells, using NF1 Antibody. The picture on the right is blocked with the synthesized peptide.**



**Western blot analysis of lysates from HepG2 cells, using NF1 Antibody. The lane on the right is blocked with the synthesized peptide.**