

**NEEP21 rabbit pAb****Cat#: orb765789 (Manual)**

For research use only. Not intended for diagnostic use.

<b>Product Name</b>	NEEP21 rabbit pAb
<b>Host species</b>	Rabbit
<b>Applications</b>	WB;IHC;IF;ELISA
<b>Species Cross-Reactivity</b>	Human;Mouse;Rat
<b>Recommended dilutions</b>	Western Blot: 1/500 - 1/2000. Immunohistochemistry: 1/100 - 1/300. ELISA: 1/20000. Not yet tested in other applications.
<b>Immunogen</b>	The antiserum was produced against synthesized peptide derived from human NSG1. AA range:112-161
<b>Specificity</b>	NEEP21 Polyclonal Antibody detects endogenous levels of NEEP21 protein.
<b>Formulation</b>	Liquid in PBS containing 50% glycerol, 0.5% BSA and 0.02% sodium azide..
<b>Storage</b>	Store at -20°C. Avoid repeated freeze-thaw cycles.
<b>Protein Name</b>	Neuron-specific protein family member 1
<b>Gene Name</b>	NSG1
<b>Cellular localization</b>	Membrane ; Single-pass type II membrane protein . Golgi apparatus, trans-Golgi network membrane . Endosome membrane . Cell projection, dendrite . Early endosome membrane . Late endosome membrane . Lysosome lumen . Recycling endosome membrane . Cytoplasmic vesicle membrane . Golgi apparatus, Golgi stack membrane . Endosome, multivesicular body membrane . Endoplasmic reticulum membrane . Endocytosed from the cell surface, thus enters into early endosomes, trafficks to late endosomes and degradates in lysosomes (By similarity). Endoplasmic reticulum targeting is essential for apoptosis (PubMed:20599942). Found in both stationary and motile endosomes. A previous study supports a type I membrane protein

topology (By similarity). .

**Purification**

The antibody was affinity-purified from rabbit antiserum by affinity-chromatography using epitope-specific immunogen.

**Clonality**

Polyclonal

**Concentration**

1 mg/ml

**Observed band**

26kD

**Human Gene ID**

27065

**Human Swiss-Prot Number**

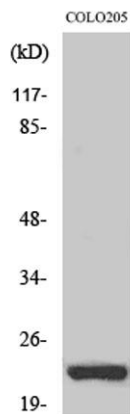
P42857

**Alternative Names**

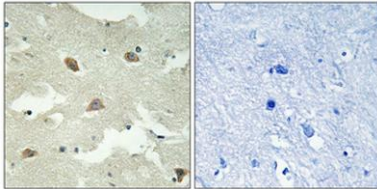
NSG1; D4S234; Neuron-specific protein family member 1; Brain neuron cytoplasmic protein 1

**Background**

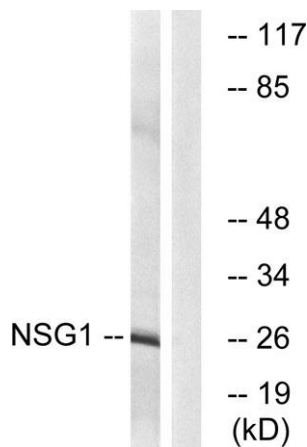
similarity:Belongs to the NSG family.,



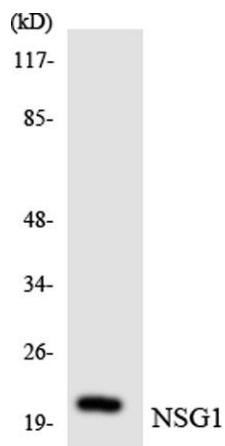
**Western Blot analysis of various cells using NEEP21 Polyclonal Antibody diluted at 1:2000**



**Immunohistochemical analysis of paraffin-embedded Human brain. Antibody was diluted at 1:100(4° overnight). High-pressure and temperature Tris-EDTA,pH8.0 was used for antigen retrieval. Negative contrl (right) obtained from antibody was pre-absorbed by immunogen peptide.**



**Western blot analysis of lysates from COLO cells, using NSG1 Antibody. The lane on the right is blocked with the synthesized peptide.**



**Western blot analysis of the lysates from K562 cells using NSG1 antibody.**