

**Myt 1 rabbit pAb****Cat#: orb765759 (Manual)**

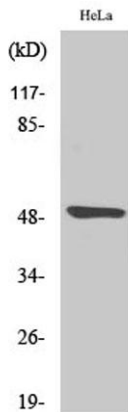
For research use only. Not intended for diagnostic use.

<b>Product Name</b>	Myt 1 rabbit pAb
<b>Host species</b>	Rabbit
<b>Applications</b>	WB;IHC;IF;ELISA
<b>Species Cross-Reactivity</b>	Human;Rat;Mouse;
<b>Recommended dilutions</b>	Western Blot: 1/500 - 1/2000. Immunohistochemistry: 1/100 - 1/300. ELISA: 1/20000. Not yet tested in other applications.
<b>Immunogen</b>	The antiserum was produced against synthesized peptide derived from human PKMYT1. AA range:49-98
<b>Specificity</b>	Myt 1 Polyclonal Antibody detects endogenous levels of Myt 1 protein.
<b>Formulation</b>	Liquid in PBS containing 50% glycerol, 0.5% BSA and 0.02% sodium azide..
<b>Storage</b>	Store at -20°C. Avoid repeated freeze-thaw cycles.
<b>Protein Name</b>	Membrane-associated tyrosine- and threonine-specific cdc2-inhibitory kinase
<b>Gene Name</b>	PKMYT1
<b>Cellular localization</b>	Endoplasmic reticulum membrane ; Peripheral membrane protein . Golgi apparatus membrane ; Peripheral membrane protein .
<b>Purification</b>	The antibody was affinity-purified from rabbit antiserum by affinity-chromatography using epitope-specific immunogen.
<b>Clonality</b>	Polyclonal

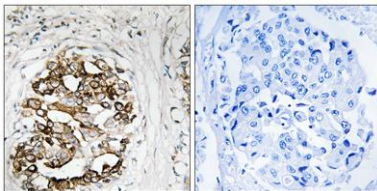
<b>Concentration</b>	1 mg/ml
<b>Observed band</b>	50kD
<b>Human Gene ID</b>	9088
<b>Human Swiss-Prot Number</b>	Q99640
<b>Alternative Names</b>	PKMYT1; MYT1; Membrane-associated tyrosine- and threonine-specific cdc2-inhibitory kinase; Myt1 kinase

## Background

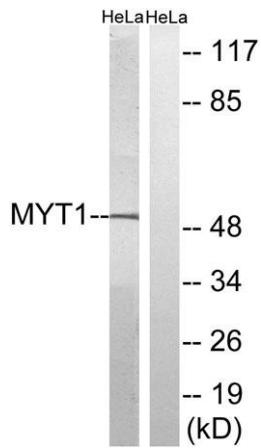
This gene encodes a member of the serine/threonine protein kinase family. The encoded protein is a membrane-associated kinase that negatively regulates the G2/M transition of the cell cycle by phosphorylating and inactivating cyclin-dependent kinase 1. The activity of the encoded protein is regulated by polo-like kinase 1. Alternatively spliced transcript variants encoding multiple isoforms have been observed for this gene. [provided by RefSeq, May 2012],



Western Blot analysis of various cells using Myt 1 Polyclonal Antibody diluted at 1:2000



Immunohistochemistry analysis of paraffin-embedded human breast carcinoma, using MYT1 Antibody. The picture on the right is blocked with the synthesized peptide.



**Western blot analysis of lysates from HeLa cells, using MYT1 Antibody. The lane on the right is blocked with the synthesized peptide.**