

MYSM1 rabbit pAb**Cat#: orb765758 (Manual)**

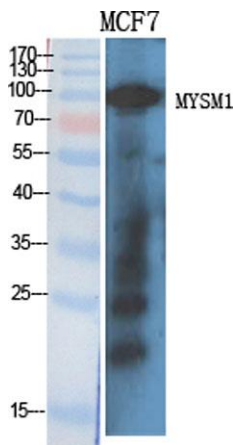
For research use only. Not intended for diagnostic use.

Product Name	MYSM1 rabbit pAb
Host species	Rabbit
Applications	WB;IHC;IF;ELISA
Species Cross-Reactivity	Human;Rat;Mouse;
Recommended dilutions	Western Blot: 1/500 - 1/2000. Immunohistochemistry: 1/100 - 1/300. ELISA: 1/40000. Not yet tested in other applications.
Immunogen	The antiserum was produced against synthesized peptide derived from human MYSM1. AA range:520-569
Specificity	MYSM1 Polyclonal Antibody detects endogenous levels of MYSM1 protein.
Formulation	Liquid in PBS containing 50% glycerol, 0.5% BSA and 0.02% sodium azide..
Storage	Store at -20°C. Avoid repeated freeze-thaw cycles.
Protein Name	Histone H2A deubiquitinase MYSM1
Gene Name	MYSM1
Cellular localization	Nucleus . Cytoplasm . Localizes to the cytoplasm in response to bacterial infection. .
Purification	The antibody was affinity-purified from rabbit antiserum by affinity-chromatography using epitope-specific immunogen.
Clonality	Polyclonal

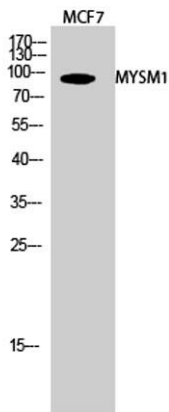
Concentration	1 mg/ml
Observed band	95kD
Human Gene ID	114803
Human Swiss-Prot Number	Q5VVJ2
Alternative Names	MYSM1; KIAA1915; Histone H2A deubiquitinase MYSM1; 2A-DUB; Myb-like; SWIRM and MPN domain-containing protein 1

Background

catalytic activity: Ubiquitin C-terminal thioester + H₂O = ubiquitin + a thiol., domain: Binds double-stranded DNA via the SANT domain. The SWIRM domain does not bind double-stranded DNA., function: Metalloprotease that specifically deubiquitinates monoubiquitinated histone H2A, a specific tag for epigenetic transcriptional repression, thereby acting as a coactivator. Preferentially deubiquitinates monoubiquitinated H2A in hyperacetylated nucleosomes. Deubiquitination of histone H2A leads to facilitate the phosphorylation and dissociation of histone H1 from the nucleosome. Acts as a coactivator by participating in the initiation and elongation steps of androgen receptor (AR)-induced gene activation., PTM: Phosphorylated upon DNA damage, probably by ATM or ATR., similarity: Belongs to the peptidase M67A family. MYSM1 subfamily., similarity: Contains 1 MPN (JAB/Mov34) domain., similarity: Contains 1 SANT domain., similarity: Contains 1 SWIRM domain., subunit: Component of a large chromatin remodeling complex, at least composed of MYSM1, PCAF, RBM10 and KIF11/TRIP5. Binds histones.,



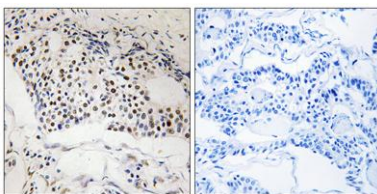
Western Blot analysis of various cells using MYSM1 Polyclonal Antibody diluted at 1:2000 cells nucleus extracted by Minute TM Cytoplasmic and Nuclear Fractionation kit (SC-003, Inventbiotech, MN, USA).



Western Blot analysis of MCF7 cells using MYSM1 Polyclonal Antibody diluted at 1:2000 cells nucleus extracted by Minute™ Cytoplasmic and Nuclear Fractionation kit (SC-003, Inventibiotech, MN, USA).



Western blot analysis of HeLa lysis using MYSM1 antibody. Antibody was diluted at 1:2000 cells nucleus extracted by Minute™ Cytoplasmic and Nuclear Fractionation kit (SC-003, Inventibiotech, MN, USA).



Immunohistochemistry analysis of paraffin-embedded human breast carcinoma, using MYSM1 Antibody. The picture on the right is blocked with the synthesized peptide.