

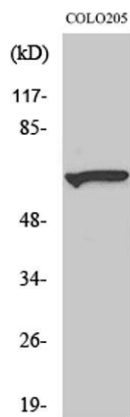
Myotubularin rabbit pAb**Cat#: orb765755 (Manual)**

For research use only. Not intended for diagnostic use.

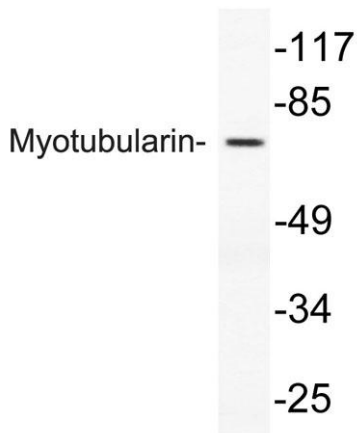
Product Name	Myotubularin rabbit pAb
Host species	Rabbit
Applications	WB;IHC
Species Cross-Reactivity	Human;Mouse
Recommended dilutions	WB 1:500-2000;IHC-p 1:50-300
Immunogen	The antiserum was produced against synthesized peptide derived from human Myotubularin. AA range:241-290
Specificity	Myotubularin Polyclonal Antibody detects endogenous levels of Myotubularin protein.
Formulation	Liquid in PBS containing 50% glycerol, 0.5% BSA and 0.02% sodium azide..
Storage	Store at -20°C. Avoid repeated freeze-thaw cycles.
Protein Name	Myotubularin
Gene Name	MTM1
Cellular localization	Cytoplasm . Cell membrane; Peripheral membrane protein . Cell projection, filopodium . Cell projection, ruffle . Late endosome . Cytoplasm, myofibril, sarcomere . Localizes as a dense cytoplasmic network (PubMed:11001925). Also localizes to the plasma membrane, including plasma membrane extensions such as filopodia and ruffles (PubMed:12118066). Predominantly located in the cytoplasm following interaction with MTMR12 (PubMed:12847286). Recruited to the late endosome following EGF stimulation (PubMed:14722070). In skeletal muscles, co-localizes with MTMR12 in the sarcomere (By similarity). .

Purification	The antibody was affinity-purified from rabbit antiserum by affinity-chromatography using epitope-specific immunogen.
Clonality	Polyclonal
Concentration	1 mg/ml
Observed band	70kD
Human Gene ID	4534
Human Swiss-Prot Number	Q13496
Alternative Names	MTM1; CG2; Myotubularin

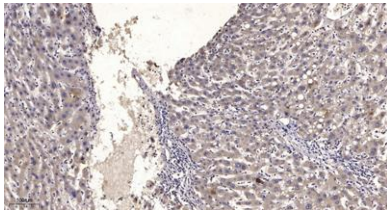
Background This gene encodes a dual-specificity phosphatase that acts on both phosphotyrosine and phosphoserine. It is required for muscle cell differentiation and mutations in this gene have been identified as being responsible for X-linked myotubular myopathy. [provided by RefSeq, Jul 2008],



Western Blot analysis of various cells using Myotubularin Polyclonal Antibody diluted at 1:500



Western blot analysis of lysate from COLO205 cells, using Myotubularin antibody.



Immunohistochemical analysis of paraffin-embedded human liver cancer. 1, Antibody was diluted at 1:200(4° overnight). 2, Tris-EDTA,pH9.0 was used for antigen retrieval. 3,Secondary antibody was diluted at 1:200(room temperature, 45min).