

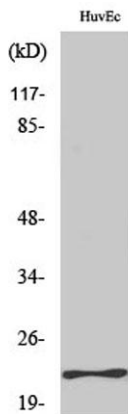
**MYL3 rabbit pAb****Cat#: orb765751 (Manual)**

For research use only. Not intended for diagnostic use.

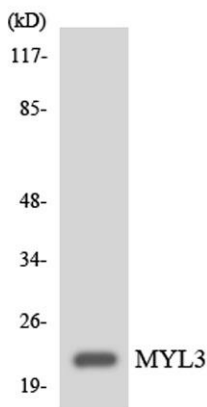
<b>Product Name</b>	MYL3 rabbit pAb
<b>Host species</b>	Rabbit
<b>Applications</b>	WB;ELISA;IHC
<b>Species Cross-Reactivity</b>	Human;Rat;Mouse;
<b>Recommended dilutions</b>	WB 1:500-2000;IHC-p 1:50-300; ELISA 2000-20000
<b>Immunogen</b>	The antiserum was produced against synthesized peptide derived from human MYL3. AA range:71-120
<b>Specificity</b>	MYL3 Polyclonal Antibody detects endogenous levels of MYL3 protein.
<b>Formulation</b>	Liquid in PBS containing 50% glycerol, 0.5% BSA and 0.02% sodium azide..
<b>Storage</b>	Store at -20°C. Avoid repeated freeze-thaw cycles.
<b>Protein Name</b>	Myosin light chain 3
<b>Gene Name</b>	MYL3
<b>Cellular localization</b>	cytosol,muscle myosin complex,myosin complex,sarcomere,A band,I band,
<b>Purification</b>	The antibody was affinity-purified from rabbit antiserum by affinity-chromatography using epitope-specific immunogen.
<b>Clonality</b>	Polyclonal

<b>Concentration</b>	1 mg/ml
<b>Observed band</b>	22kD
<b>Human Gene ID</b>	4634
<b>Human Swiss-Prot Number</b>	P08590
<b>Alternative Names</b>	MYL3; Myosin light chain 3; Cardiac myosin light chain 1; CMLC1; Myosin light chain 1; slow-twitch muscle B/ventricular isoform; MLC1SB; Ventricular/slow twitch myosin alkali light chain

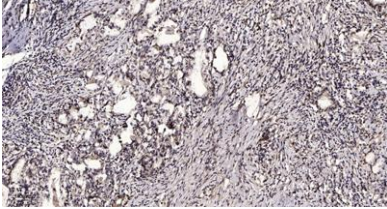
**Background** MYL3 encodes myosin light chain 3, an alkali light chain also referred to in the literature as both the ventricular isoform and the slow skeletal muscle isoform. Mutations in MYL3 have been identified as a cause of mid-left ventricular chamber type hypertrophic cardiomyopathy. [provided by RefSeq, Jul 2008],



Western Blot analysis of various cells using MYL3 Polyclonal Antibody



Western blot analysis of the lysates from HeLa cells using MYL3 antibody.



**Immunohistochemical analysis of paraffin-embedded human Gastric adenocarcinoma. 1, Antibody was diluted at 1:200(4° overnight). 2, Tris-EDTA,pH9.0 was used for antigen retrieval. 3,Secondary antibody was diluted at 1:200(room temperature, 45min).**