

**MYH14 rabbit pAb****Cat#: orb765750 (Manual)**

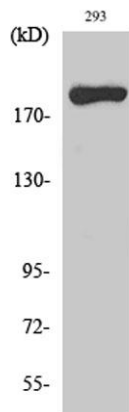
For research use only. Not intended for diagnostic use.

<b>Product Name</b>	MYH14 rabbit pAb
<b>Host species</b>	Rabbit
<b>Applications</b>	WB;IHC;IF;ELISA
<b>Species Cross-Reactivity</b>	Human;Mouse
<b>Recommended dilutions</b>	Western Blot: 1/500 - 1/2000. Immunohistochemistry: 1/100 - 1/300. ELISA: 1/5000. Not yet tested in other applications.
<b>Immunogen</b>	The antiserum was produced against synthesized peptide derived from human MYH14. AA range:1051-1100
<b>Specificity</b>	MYH14 Polyclonal Antibody detects endogenous levels of MYH14 protein.
<b>Formulation</b>	Liquid in PBS containing 50% glycerol, 0.5% BSA and 0.02% sodium azide..
<b>Storage</b>	Store at -20°C. Avoid repeated freeze-thaw cycles.
<b>Protein Name</b>	Myosin-14
<b>Gene Name</b>	MYH14
<b>Cellular localization</b>	stress fiber,cytosol,brush border,membrane,myosin complex,myosin II complex,axon,growth cone,actomyosin,myelin sheath,extracellular exosome,myosin II filament,
<b>Purification</b>	The antibody was affinity-purified from rabbit antiserum by affinity-chromatography using epitope-specific immunogen.

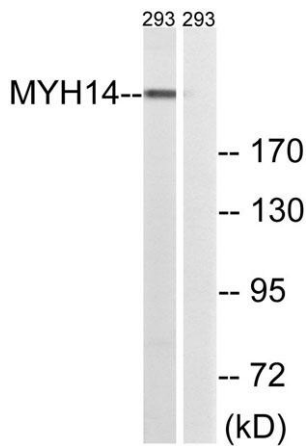
<b>Clonality</b>	Polyclonal
<b>Concentration</b>	1 mg/ml
<b>Observed band</b>	228kD
<b>Human Gene ID</b>	79784
<b>Human Swiss-Prot Number</b>	Q7Z406
<b>Alternative Names</b>	MYH14; KIAA2034; FP17425; Myosin-14; Myosin heavy chain 14; Myosin heavy chain; non-muscle IIc; Non-muscle myosin heavy chain IIc; NMHC II-C

**Background**

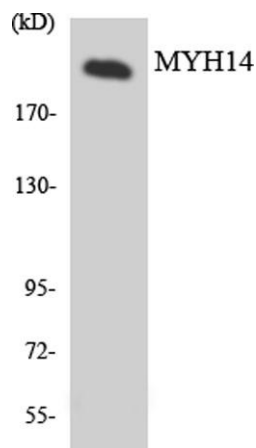
This gene encodes a member of the myosin superfamily. The protein represents a conventional non-muscle myosin; it should not be confused with the unconventional myosin-14 (MYO14). Myosins are actin-dependent motor proteins with diverse functions including regulation of cytokinesis, cell motility, and cell polarity. Mutations in this gene result in one form of autosomal dominant hearing impairment. Multiple transcript variants encoding different isoforms have been found for this gene. [provided by RefSeq, Dec 2011],



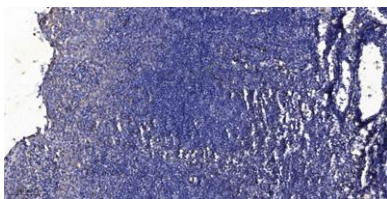
**Western Blot analysis of various cells using MYH14 Polyclonal Antibody diluted at 1:1000**



Western blot analysis of lysates from 293 cells, using MYH14 Antibody. The lane on the right is blocked with the synthesized peptide.



Western blot analysis of the lysates from HeLa cells using MYH14 antibody.



Immunohistochemical analysis of paraffin-embedded human tonsil. 1, Antibody was diluted at 1:200(4° overnight). 2, Tris-EDTA,pH9.0 was used for antigen retrieval. 3,Secondary antibody was diluted at 1:200(room temperature, 30min).