

**MST-3 rabbit pAb****Cat#: orb765736 (Manual)**

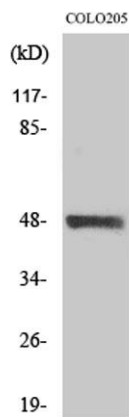
For research use only. Not intended for diagnostic use.

<b>Product Name</b>	MST-3 rabbit pAb
<b>Host species</b>	Rabbit
<b>Applications</b>	WB;IHC;IF;ELISA
<b>Species Cross-Reactivity</b>	Human;Mouse;Rat
<b>Recommended dilutions</b>	Western Blot: 1/500 - 1/2000. Immunohistochemistry: 1/100 - 1/300. ELISA: 1/40000. Not yet tested in other applications.
<b>Immunogen</b>	The antiserum was produced against synthesized peptide derived from human STK24. AA range:319-368
<b>Specificity</b>	MST-3 Polyclonal Antibody detects endogenous levels of MST-3 protein.
<b>Formulation</b>	Liquid in PBS containing 50% glycerol, 0.5% BSA and 0.02% sodium azide..
<b>Storage</b>	Store at -20°C. Avoid repeated freeze-thaw cycles.
<b>Protein Name</b>	Serine/threonine-protein kinase 24
<b>Gene Name</b>	STK24
<b>Cellular localization</b>	Cytoplasm. Nucleus. Membrane. The truncated form (MST3/N) translocates to the nucleus. Colocalizes with STK38L in the membrane.
<b>Purification</b>	The antibody was affinity-purified from rabbit antiserum by affinity-chromatography using epitope-specific immunogen.
<b>Clonality</b>	Polyclonal

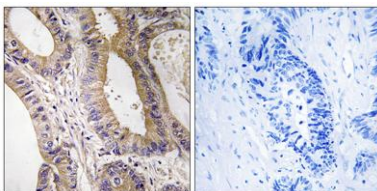
<b>Concentration</b>	1 mg/ml
<b>Observed band</b>	50kD
<b>Human Gene ID</b>	8428
<b>Human Swiss-Prot Number</b>	Q9Y6E0
<b>Alternative Names</b>	STK24; MST3; STK3; Serine/threonine-protein kinase 24; Mammalian STE20-like protein kinase 3; MST-3; STE20-like kinase MST3

## Background

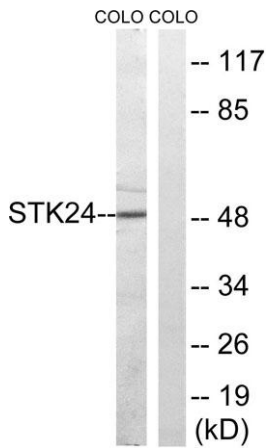
This gene encodes a serine/threonine protein kinase that functions upstream of mitogen-activated protein kinase (MAPK) signaling. The encoded protein is cleaved into two chains by caspases; the N-terminal fragment (MST3/N) translocates to the nucleus and promotes programmed cells death. There is a pseudogene for this gene on chromosome X. Alternative splicing results in multiple transcript variants. [provided by RefSeq, Nov 2013],



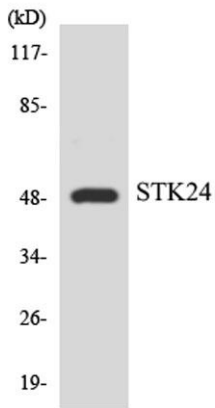
Western Blot analysis of various cells using MST-3 Polyclonal Antibody diluted at 1:1000



Immunohistochemistry analysis of paraffin-embedded human colon carcinoma tissue, using STK24 Antibody. The picture on the right is blocked with the synthesized peptide.



Western blot analysis of lysates from COLO cells, using STK24 Antibody. The lane on the right is blocked with the synthesized peptide.



Western blot analysis of the lysates from COLO205 cells using STK24 antibody.