

MRRF rabbit pAb**Cat#: orb765730 (Manual)**

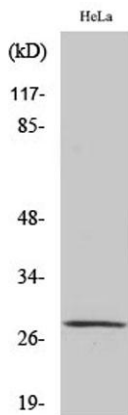
For research use only. Not intended for diagnostic use.

Product Name	MRRF rabbit pAb
Host species	Rabbit
Applications	WB;IHC;IF;ELISA
Species Cross-Reactivity	Human;Mouse;Rat
Recommended dilutions	Western Blot: 1/500 - 1/2000. Immunohistochemistry: 1/100 - 1/300. ELISA: 1/20000. Not yet tested in other applications.
Immunogen	The antiserum was produced against synthesized peptide derived from human MRRF. AA range:181-230
Specificity	MRRF Polyclonal Antibody detects endogenous levels of MRRF protein.
Formulation	Liquid in PBS containing 50% glycerol, 0.5% BSA and 0.02% sodium azide..
Storage	Store at -20°C. Avoid repeated freeze-thaw cycles.
Protein Name	Ribosome-recycling factor mitochondrial
Gene Name	MRRF
Cellular localization	Mitochondrion .
Purification	The antibody was affinity-purified from rabbit antiserum by affinity-chromatography using epitope-specific immunogen.
Clonality	Polyclonal

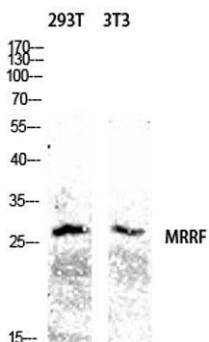
Concentration	1 mg/ml
Observed band	28kD
Human Gene ID	92399
Human Swiss-Prot Number	Q96E11
Alternative Names	MRRF; Ribosome-recycling factor; mitochondrial; RRF; Ribosome-releasing factor, mitochondrial

Background

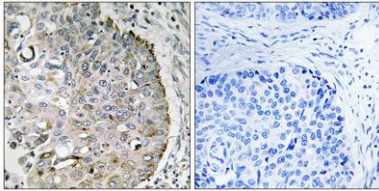
This gene encodes a ribosome recycling factor, which is a component of the mitochondrial translational machinery. The encoded protein, along with mitochondrial elongation factor 2, functions in ribosomal recycling at the termination of mitochondrial translation by mediating the disassembly of ribosomes from messenger RNA. A pseudogene of this gene has been identified on chromosome X. [provided by RefSeq, Oct 2016],



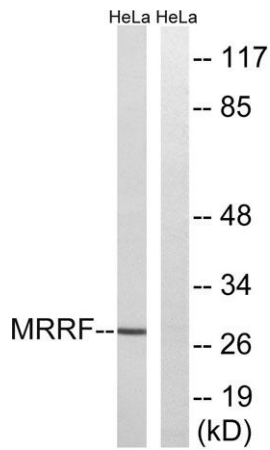
Western Blot analysis of various cells using MRRF Polyclonal Antibody diluted at 1:1000



Western blot analysis of 293T 3T3 lysis using MRRF antibody. Antibody was diluted at 1:1000



Immunohistochemistry analysis of paraffin-embedded human lung carcinoma tissue, using MRRF Antibody. The picture on the right is blocked with the synthesized peptide.



Western blot analysis of lysates from HeLa cells, using MRRF Antibody. The lane on the right is blocked with the synthesized peptide.