

MRP-S25 rabbit pAb**Cat#: orb765724 (Manual)**

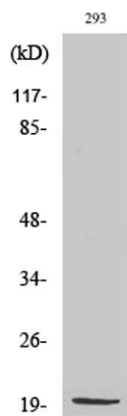
For research use only. Not intended for diagnostic use.

Product Name	MRP-S25 rabbit pAb
Host species	Rabbit
Applications	WB;ELISA;IHC
Species Cross-Reactivity	Human;Mouse;Rat
Recommended dilutions	WB 1:500-2000;IHC-p 1:50-300; ELISA 2000-20000
Immunogen	The antiserum was produced against synthesized peptide derived from human MRPS25. AA range:124-173
Specificity	MRP-S25 Polyclonal Antibody detects endogenous levels of MRP-S25 protein.
Formulation	Liquid in PBS containing 50% glycerol, 0.5% BSA and 0.02% sodium azide..
Storage	Store at -20°C. Avoid repeated freeze-thaw cycles.
Protein Name	28S ribosomal protein S25 mitochondrial
Gene Name	MRPS25
Cellular localization	Mitochondrion .
Purification	The antibody was affinity-purified from rabbit antiserum by affinity-chromatography using epitope-specific immunogen.
Clonality	Polyclonal

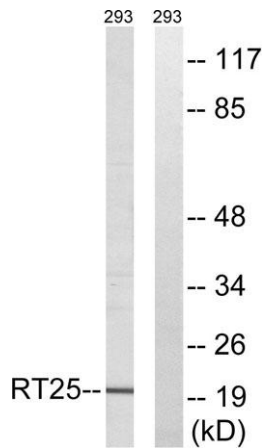
Concentration	1 mg/ml
Observed band	20kD
Human Gene ID	64432
Human Swiss-Prot Number	P82663
Alternative Names	MRPS25; RPMS25; 28S ribosomal protein S25; mitochondrial; MRP-S25; S25mt

Background

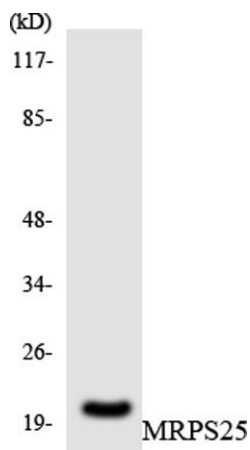
Mammalian mitochondrial ribosomal proteins are encoded by nuclear genes and help in protein synthesis within the mitochondrion. Mitochondrial ribosomes (mitoribosomes) consist of a small 28S subunit and a large 39S subunit. They have an estimated 75% protein to rRNA composition compared to prokaryotic ribosomes, where this ratio is reversed. Another difference between mammalian mitoribosomes and prokaryotic ribosomes is that the latter contain a 5S rRNA. Among different species, the proteins comprising the mitoribosome differ greatly in sequence, and sometimes in biochemical properties, which prevents easy recognition by sequence homology. This gene encodes a 28S subunit protein. A pseudogene corresponding to this gene is found on chromosome 4. Alternative splicing results in multiple transcript variants. [provided by RefSeq, Feb 2016],



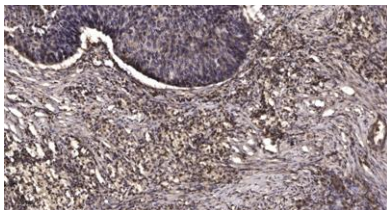
Western Blot analysis of various cells using MRP-S25 Polyclonal Antibody diluted at 1:2000



Western blot analysis of lysates from 293 cells, using MRPS25 Antibody. The lane on the right is blocked with the synthesized peptide.



Western blot analysis of the lysates from HepG2 cells using MRPS25 antibody.



Immunohistochemical analysis of paraffin-embedded human Squamous cell carcinoma of lung. 1, Antibody was diluted at 1:200(4° overnight). 2, Tris-EDTA,pH9.0 was used for antigen retrieval. 3,Secondary antibody was diluted at 1:200(room temperature, 45min).