

**MRP-S21 rabbit pAb****Cat#: orb765722 (Manual)**

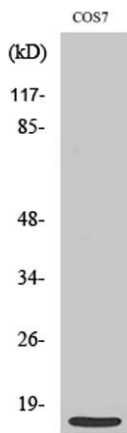
For research use only. Not intended for diagnostic use.

<b>Product Name</b>	MRP-S21 rabbit pAb
<b>Host species</b>	Rabbit
<b>Applications</b>	WB;IHC;IF;ELISA
<b>Species Cross-Reactivity</b>	Human;Mouse;Rat;Monkey
<b>Recommended dilutions</b>	Western Blot: 1/500 - 1/2000. Immunohistochemistry: 1/100 - 1/300. Immunofluorescence: 1/200 - 1/1000. ELISA: 1/40000. Not yet tested in other applications.
<b>Immunogen</b>	The antiserum was produced against synthesized peptide derived from human MRPS21. AA range:38-87
<b>Specificity</b>	MRP-S21 Polyclonal Antibody detects endogenous levels of MRP-S21 protein.
<b>Formulation</b>	Liquid in PBS containing 50% glycerol, 0.5% BSA and 0.02% sodium azide..
<b>Storage</b>	Store at -20°C. Avoid repeated freeze-thaw cycles.
<b>Protein Name</b>	28S ribosomal protein S21 mitochondrial
<b>Gene Name</b>	MRPS21
<b>Cellular localization</b>	Mitochondrion .
<b>Purification</b>	The antibody was affinity-purified from rabbit antiserum by affinity-chromatography using epitope-specific immunogen.
<b>Clonality</b>	Polyclonal

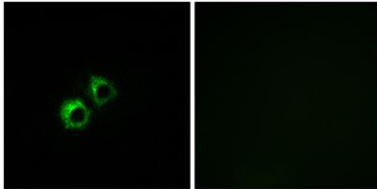
<b>Concentration</b>	1 mg/ml
<b>Observed band</b>	11kD
<b>Human Gene ID</b>	54460
<b>Human Swiss-Prot Number</b>	P82921
<b>Alternative Names</b>	MRPS21; RPMS21; MDS016; 28S ribosomal protein S21; mitochondrial; MRP-S21; S21mt

**Background**

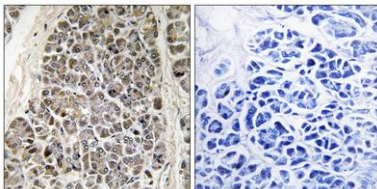
Mammalian mitochondrial ribosomal proteins are encoded by nuclear genes and help in protein synthesis within the mitochondrion. Mitochondrial ribosomes (mitoribosomes) consist of a small 28S subunit and a large 39S subunit. They have an estimated 75% protein to rRNA composition compared to prokaryotic ribosomes, where this ratio is reversed. Another difference between mammalian mitoribosomes and prokaryotic ribosomes is that the latter contain a 5S rRNA. Among different species, the proteins comprising the mitoribosome differ greatly in sequence, and sometimes in biochemical properties, which prevents easy recognition by sequence homology. This gene encodes a 28S subunit protein that belongs to the ribosomal protein S21P family. Pseudogenes corresponding to this gene are found on chromosomes 1p, 1q, 9p, 10p, 10q, 16q, and 17q. Available sequence data analyses identified splice variants.



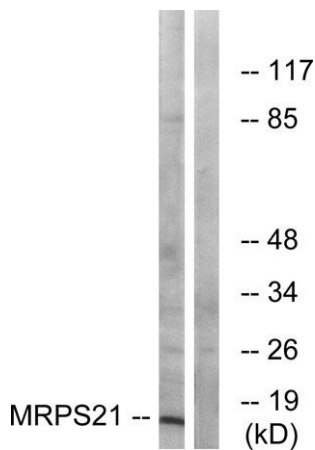
**Western Blot analysis of various cells using MRP-S21 Polyclonal Antibody diluted at 1:500**



**Immunofluorescence analysis of MCF7 cells, using MRPS21 Antibody. The picture on the right is blocked with the synthesized peptide.**



**Immunohistochemistry analysis of paraffin-embedded human pancreas tissue, using MRPS21 Antibody. The picture on the right is blocked with the synthesized peptide.**



**Western blot analysis of lysates from COS cells, using MRPS21 Antibody. The lane on the right is blocked with the synthesized peptide.**