

MRP-L12 rabbit pAb**Cat#: orb765703 (Manual)**

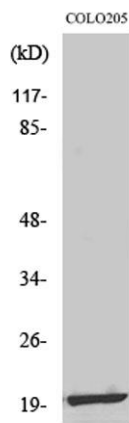
For research use only. Not intended for diagnostic use.

Product Name	MRP-L12 rabbit pAb
Host species	Rabbit
Applications	WB;ELISA;IHC
Species Cross-Reactivity	Human;Mouse
Recommended dilutions	WB 1:500-2000;IHC-p 1:50-300; ELISA 2000-20000
Immunogen	The antiserum was produced against synthesized peptide derived from human MRPL12. AA range:31-80
Specificity	MRP-L12 Polyclonal Antibody detects endogenous levels of MRP-L12 protein.
Formulation	Liquid in PBS containing 50% glycerol, 0.5% BSA and 0.02% sodium azide..
Storage	Store at -20°C. Avoid repeated freeze-thaw cycles.
Protein Name	39S ribosomal protein L12 mitochondrial
Gene Name	MRPL12
Cellular localization	Mitochondrion .
Purification	The antibody was affinity-purified from rabbit antiserum by affinity-chromatography using epitope-specific immunogen.
Clonality	Polyclonal

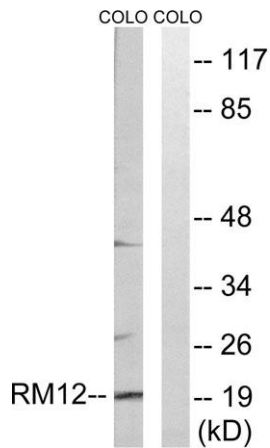
Concentration	1 mg/ml
Observed band	21kD
Human Gene ID	6182
Human Swiss-Prot Number	P52815
Alternative Names	MRPL12; RPML12; 39S ribosomal protein L12; mitochondrial; L12mt; MRP-L12; 5c5-2

Background

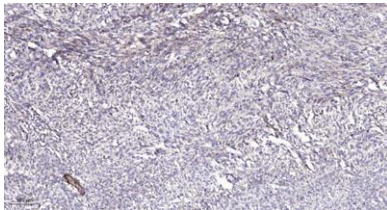
Mammalian mitochondrial ribosomal proteins are encoded by nuclear genes and help in protein synthesis within the mitochondrion. Mitochondrial ribosomes (mitoribosomes) consist of a small 28S subunit and a large 39S subunit. They have an estimated 75% protein to rRNA composition compared to prokaryotic ribosomes, where this ratio is reversed. Another difference between mammalian mitoribosomes and prokaryotic ribosomes is that the latter contain a 5S rRNA. Among different species, the proteins comprising the mitoribosome differ greatly in sequence, and sometimes in biochemical properties, which prevents easy recognition by sequence homology. This gene encodes a 39S subunit protein which forms homodimers. In prokaryotic ribosomes, two L7/L12 dimers and one L10 protein form the L8 protein complex. [provided by RefSeq, Jul 2008],



Western Blot analysis of various cells using MRP-L12 Polyclonal Antibody



Western blot analysis of lysates from COLO cells, using MRPL12 Antibody. The lane on the right is blocked with the synthesized peptide.



Immunohistochemical analysis of paraffin-embedded human Colon cancer. 1, Antibody was diluted at 1:200(4° overnight). 2, Tris-EDTA,pH9.0 was used for antigen retrieval. 3,Secondary antibody was diluted at 1:200(room temperature, 45min).