

Mos rabbit pAb**Cat#: orb765688 (Manual)**

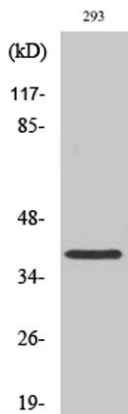
For research use only. Not intended for diagnostic use.

Product Name	Mos rabbit pAb
Host species	Rabbit
Applications	WB;ELISA;IHC
Species Cross-Reactivity	Human;Rat;Mouse;
Recommended dilutions	WB 1:500-2000;IHC-p 1:50-300; ELISA 2000-20000
Immunogen	The antiserum was produced against synthesized peptide derived from human MOS. AA range:61-110
Specificity	Mos Polyclonal Antibody detects endogenous levels of Mos protein.
Formulation	Liquid in PBS containing 50% glycerol, 0.5% BSA and 0.02% sodium azide..
Storage	Store at -20°C. Avoid repeated freeze-thaw cycles.
Protein Name	Proto-oncogene serine/threonine-protein kinase mos
Gene Name	MOS
Cellular localization	intracellular,
Purification	The antibody was affinity-purified from rabbit antiserum by affinity-chromatography using epitope-specific immunogen.
Clonality	Polyclonal

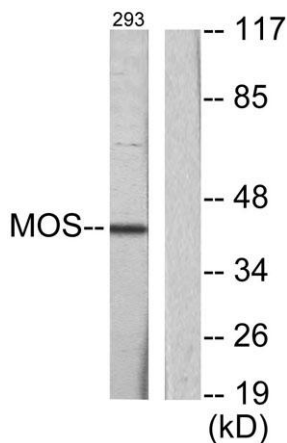
Concentration	1 mg/ml
Observed band	40kD
Human Gene ID	4342
Human Swiss-Prot Number	P00540
Alternative Names	MOS; Proto-oncogene serine/threonine-protein kinase mos; Oocyte maturation factor mos; Proto-oncogene c-Mos

Background

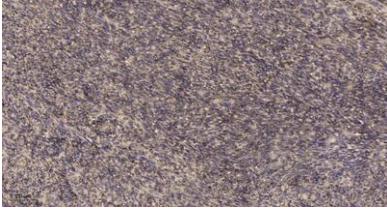
MOS is a serine/threonine kinase that activates the MAP kinase cascade through direct phosphorylation of the MAP kinase activator MEK (MAP2K1; MIM 176872) (Prasad et al., 2008 [PubMed 18246541]).[supplied by OMIM, Jul 2009].



Western Blot analysis of various cells using Mos Polyclonal Antibody



Western blot analysis of lysates from 293 cells, using MOS Antibody. The lane on the right is blocked with the synthesized peptide.



Immunohistochemical analysis of paraffin-embedded human uterus. 1, Antibody was diluted at 1:200(4° overnight). 2, Tris-EDTA,pH9.0 was used for antigen retrieval. 3,Secondary antibody was diluted at 1:200(room temperature, 45min).