

MLTK rabbit pAb**Cat#: orb765676 (Manual)**

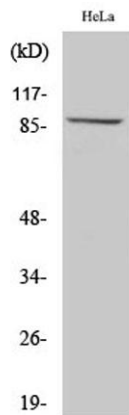
For research use only. Not intended for diagnostic use.

Product Name	MLTK rabbit pAb
Host species	Rabbit
Applications	WB;IHC
Species Cross-Reactivity	Human;Mouse
Recommended dilutions	WB 1:500-2000;IHC-p 1:50-300
Immunogen	The antiserum was produced against synthesized peptide derived from human MLTK. AA range:701-750
Specificity	MLTK Polyclonal Antibody detects endogenous levels of MLTK protein.
Formulation	Liquid in PBS containing 50% glycerol, 0.5% BSA and 0.02% sodium azide..
Storage	Store at -20°C. Avoid repeated freeze-thaw cycles.
Protein Name	Mitogen-activated protein kinase kinase kinase MLT
Gene Name	MLTK
Cellular localization	Cytoplasm . Nucleus . Translocates to the nucleus upon ultraviolet B irradiation. .
Purification	The antibody was affinity-purified from rabbit antiserum by affinity-chromatography using epitope-specific immunogen.
Clonality	Polyclonal

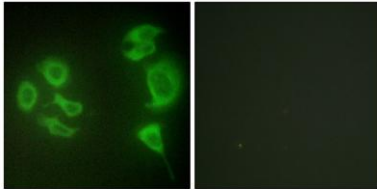
Concentration	1 mg/ml
Observed band	91kD
Human Gene ID	51776
Human Swiss-Prot Number	Q9NYL2
Alternative Names	MLTK; ZAK; HCCS4; Mitogen-activated protein kinase kinase kinase MLT; Human cervical cancer suppressor gene 4 protein; HCCS-4; Leucine zipper- and sterile alpha motif-containing kinase; MLK-like mitogen-activated protein triple kinase; Mixe

Background

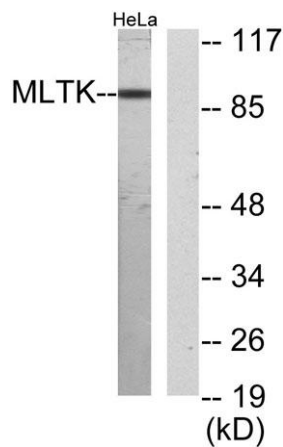
This gene is a member of the MAPKKK family of signal transduction molecules and encodes a protein with an N-terminal kinase catalytic domain, followed by a leucine zipper motif and a sterile-alpha motif (SAM). This magnesium-binding protein forms homodimers and is located in the cytoplasm. The protein mediates gamma radiation signaling leading to cell cycle arrest and activity of this protein plays a role in cell cycle checkpoint regulation in cells. The protein also has pro-apoptotic activity. Alternate transcriptional splice variants, encoding different isoforms, have been characterized. [provided by RefSeq, Jul 2008],



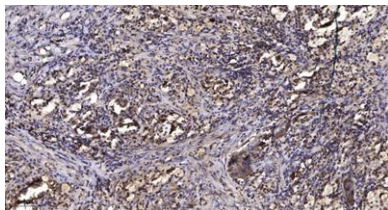
Western Blot analysis of various cells using MLTK Polyclonal Antibody diluted at 1:1000



Immunofluorescence analysis of HepG2 cells, using MLTK Antibody. The picture on the right is blocked with the synthesized peptide.



Western blot analysis of lysates from HeLa cells, using MLTK Antibody. The lane on the right is blocked with the synthesized peptide.



Immunohistochemical analysis of paraffin-embedded human Squamous cell carcinoma of lung. 1, Antibody was diluted at 1:200(4° overnight). 2, Tris-EDTA,pH9.0 was used for antigen retrieval. 3,Secondary antibody was diluted at 1:200(room temperature, 45min).