

MIPP rabbit pAb**Cat#: orb765667 (Manual)**

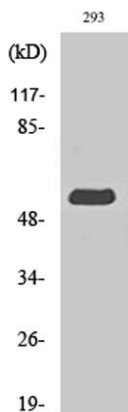
For research use only. Not intended for diagnostic use.

Product Name	MIPP rabbit pAb
Host species	Rabbit
Applications	WB;IHC;IF;ELISA
Species Cross-Reactivity	Human;Mouse;Rat
Recommended dilutions	Western Blot: 1/500 - 1/2000. Immunohistochemistry: 1/100 - 1/300. ELISA: 1/10000. Not yet tested in other applications.
Immunogen	The antiserum was produced against synthesized peptide derived from human MINPP1. AA range:328-377
Specificity	MIPP Polyclonal Antibody detects endogenous levels of MIPP protein.
Formulation	Liquid in PBS containing 50% glycerol, 0.5% BSA and 0.02% sodium azide..
Storage	Store at -20°C. Avoid repeated freeze-thaw cycles.
Protein Name	Multiple inositol polyphosphate phosphatase 1
Gene Name	MINPP1
Cellular localization	Endoplasmic reticulum lumen .
Purification	The antibody was affinity-purified from rabbit antiserum by affinity-chromatography using epitope-specific immunogen.
Clonality	Polyclonal

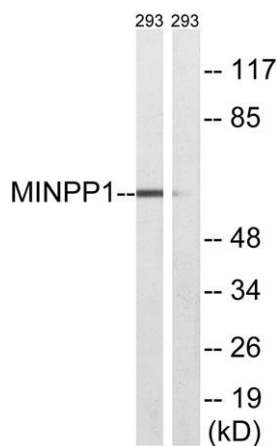
Concentration	1 mg/ml
Observed band	60kD
Human Gene ID	9562
Human Swiss-Prot Number	Q9UNW1
Alternative Names	MINPP1; MIPP; Multiple inositol polyphosphate phosphatase 1; 2; 3-bisphosphoglycerate 3-phosphatase; 2,3-BPG phosphatase; Inositol; 1,3,4,5)-tetrakisphosphate 3-phosphatase; Ins(1,3,4,5)P(4) 3-phosphatase

Background

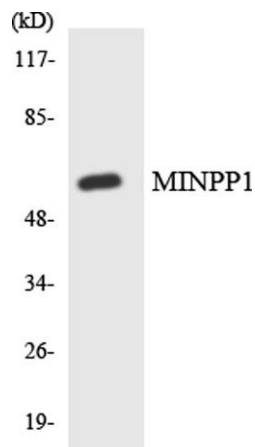
This gene encodes multiple inositol polyphosphate phosphatase; an enzyme that removes 3-phosphate from inositol phosphate substrates. It is the only enzyme known to hydrolyze inositol pentakisphosphate and inositol hexakisphosphate. This enzyme also converts 2,3 bisphosphoglycerate (2,3-BPG) to 2-phosphoglycerate; an activity formerly thought to be exclusive to 2,3-BPG synthase/2-phosphatase (BPGM) in the Rapoport-Luebering shunt of the glycolytic pathway.[provided by RefSeq, Sep 2009],



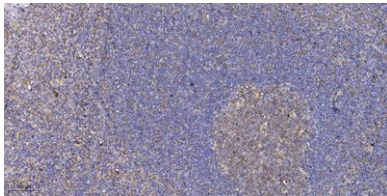
Western Blot analysis of various cells using MIPP Polyclonal Antibody



Western blot analysis of lysates from 293 cells, using MINPP1 Antibody. The lane on the right is blocked with the synthesized peptide.



Western blot analysis of the lysates from HepG2 cells using MINPP1 antibody.



Immunohistochemical analysis of paraffin-embedded human tonsil. 1, Antibody was diluted at 1:200(4° overnight). 2, Tris-EDTA,pH9.0 was used for antigen retrieval. 3,Secondary antibody was diluted at 1:200(room temperature, 30min).