

**Menin rabbit pAb****Cat#: orb765653 (Manual)**

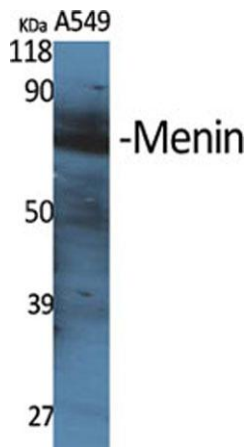
For research use only. Not intended for diagnostic use.

<b>Product Name</b>	Menin rabbit pAb
<b>Host species</b>	Rabbit
<b>Applications</b>	WB;IHC;IF;ELISA
<b>Species Cross-Reactivity</b>	Human;Mouse;Rat
<b>Recommended dilutions</b>	Western Blot: 1/500 - 1/2000. Immunohistochemistry: 1/100 - 1/300. ELISA: 1/20000. Not yet tested in other applications.
<b>Immunogen</b>	The antiserum was produced against synthesized peptide derived from human MEN1. AA range:181-230
<b>Specificity</b>	Menin Polyclonal Antibody detects endogenous levels of Menin protein.
<b>Formulation</b>	Liquid in PBS containing 50% glycerol, 0.5% BSA and 0.02% sodium azide..
<b>Storage</b>	Store at -20°C. Avoid repeated freeze-thaw cycles.
<b>Protein Name</b>	Menin
<b>Gene Name</b>	MEN1
<b>Cellular localization</b>	Nucleus . Concentrated in nuclear body-like structures. Relocates to the nuclear matrix upon gamma irradiation.
<b>Purification</b>	The antibody was affinity-purified from rabbit antiserum by affinity-chromatography using epitope-specific immunogen.
<b>Clonality</b>	Polyclonal

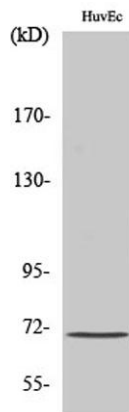
<b>Concentration</b>	1 mg/ml
<b>Observed band</b>	67kD
<b>Human Gene ID</b>	4221
<b>Human Swiss-Prot Number</b>	O00255
<b>Alternative Names</b>	MEN1; SCG2; Menin

## Background

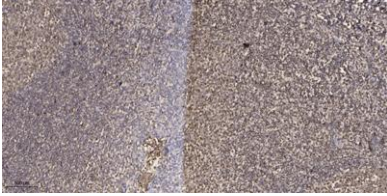
This gene encodes menin, a putative tumor suppressor associated with a syndrome known as multiple endocrine neoplasia type 1. In vitro studies have shown menin is localized to the nucleus, possesses two functional nuclear localization signals, and inhibits transcriptional activation by JunD, however, the function of this protein is not known. Two messages have been detected on northern blots but the larger message has not been characterized. Alternative splicing results in multiple transcript variants. [provided by RefSeq, Oct 2008],



Western Blot analysis of various cells using Menin Polyclonal Antibody diluted at 1:500



Western Blot analysis of HuvEc cells using Menin Polyclonal Antibody diluted at 1:500



**Immunohistochemical analysis of paraffin-embedded human tonsil. 1, Antibody was diluted at 1:200(4° overnight). 2, Tris-EDTA,pH9.0 was used for antigen retrieval. 3,Secondary antibody was diluted at 1:200(room temperature, 45min).**