

MEL-1B-R rabbit pAb**Cat#: orb765651 (Manual)**

For research use only. Not intended for diagnostic use.

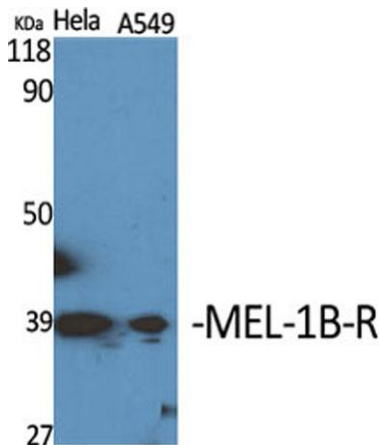
Product Name	MEL-1B-R rabbit pAb
Host species	Rabbit
Applications	WB;IHC
Species Cross-Reactivity	Human;Rat;Mouse;
Recommended dilutions	WB 1:500-2000;IHC-p 1:50-300
Immunogen	The antiserum was produced against synthesized peptide derived from human MTR1B. AA range:301-350
Specificity	MEL-1B-R Polyclonal Antibody detects endogenous levels of MEL-1B-R protein.
Formulation	Liquid in PBS containing 50% glycerol, 0.5% BSA and 0.02% sodium azide..
Storage	Store at -20°C. Avoid repeated freeze-thaw cycles.
Protein Name	Melatonin receptor type 1B
Gene Name	MTNR1B
Cellular localization	Cell membrane; Multi-pass membrane protein.
Purification	The antibody was affinity-purified from rabbit antiserum by affinity-chromatography using epitope-specific immunogen.
Clonality	Polyclonal

Explore. Bioreagents.

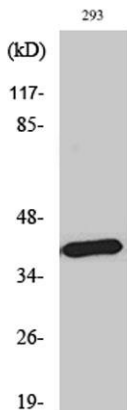
Concentration	1 mg/ml
Observed band	40kD
Human Gene ID	4544
Human Swiss-Prot Number	P49286
Alternative Names	MTNR1B; Melatonin receptor type 1B; Mel-1B-R; Mel1b receptor

Background

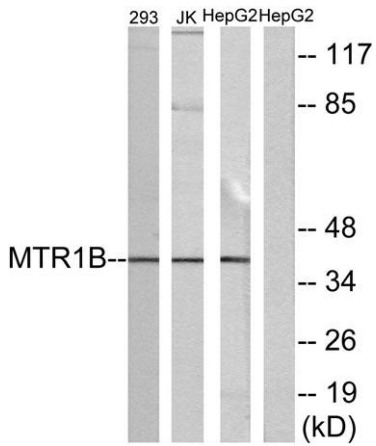
This gene encodes one of two high affinity forms of a receptor for melatonin, the primary hormone secreted by the pineal gland. This gene product is an integral membrane protein that is a G-protein coupled, 7-transmembrane receptor. It is found primarily in the retina and brain although this detection requires RT-PCR. It is thought to participate in light-dependent functions in the retina and may be involved in the neurobiological effects of melatonin. [provided by RefSeq, Jul 2008],



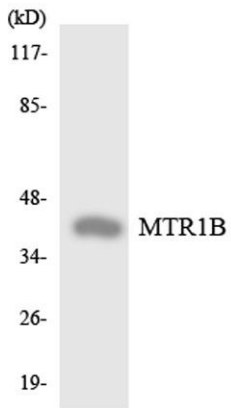
Western Blot analysis of various cells using MEL-1B-R Polyclonal Antibody diluted at 1:1000



Western Blot analysis of HepG2 cells using MEL-1B-R Polyclonal Antibody diluted at 1:1000



Western blot analysis of lysates from 293, Jurkat, and HepG2 cells, using MTR1B Antibody. The lane on the right is blocked with the synthesized peptide.



Western blot analysis of the lysates from HeLa cells using MTR1B antibody.