

MADD rabbit pAb**Cat#: orb765614 (Manual)**

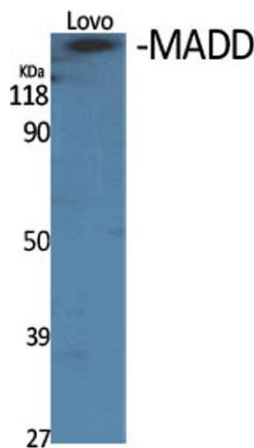
For research use only. Not intended for diagnostic use.

Product Name	MADD rabbit pAb
Host species	Rabbit
Applications	WB;IHC;IF;ELISA
Species Cross-Reactivity	Human;Mouse;Rat
Recommended dilutions	Western Blot: 1/500 - 1/2000. Immunohistochemistry: 1/100 - 1/300. Immunofluorescence: 1/200 - 1/1000. ELISA: 1/5000. Not yet tested in other applications.
Immunogen	The antiserum was produced against synthesized peptide derived from human MADD. AA range:751-800
Specificity	MADD Polyclonal Antibody detects endogenous levels of MADD protein.
Formulation	Liquid in PBS containing 50% glycerol, 0.5% BSA and 0.02% sodium azide..
Storage	Store at -20°C. Avoid repeated freeze-thaw cycles.
Protein Name	MAP kinase-activating death domain protein
Gene Name	MADD
Cellular localization	Cell membrane . Cytoplasm . Cell projection, axon .
Purification	The antibody was affinity-purified from rabbit antiserum by affinity-chromatography using epitope-specific immunogen.
Clonality	Polyclonal

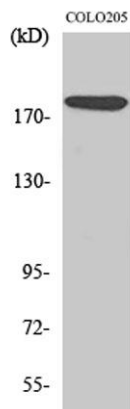
Concentration	1 mg/ml
Observed band	183kD
Human Gene ID	8567
Human Swiss-Prot Number	Q8WXG6
Alternative Names	MADD; DENN; IG20; KIAA0358; MAP kinase-activating death domain protein; Differentially expressed in normal and neoplastic cells; Insulinoma glucagonoma clone 20; Rab3 GDP/GTP exchange factor

Background

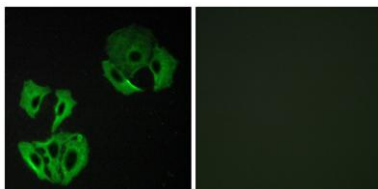
Tumor necrosis factor alpha (TNF-alpha) is a signaling molecule that interacts with one of two receptors on cells targeted for apoptosis. The apoptotic signal is transduced inside these cells by cytoplasmic adaptor proteins. The protein encoded by this gene is a death domain-containing adaptor protein that interacts with the death domain of TNF-alpha receptor 1 to activate mitogen-activated protein kinase (MAPK) and propagate the apoptotic signal. It is membrane-bound and expressed at a higher level in neoplastic cells than in normal cells. Several transcript variants encoding different isoforms have been described for this gene. [provided by RefSeq, Jul 2008],



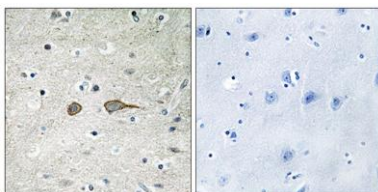
Western Blot analysis of various cells using MADD Polyclonal Antibody diluted at 1:1000



Western Blot analysis of Jurkat cells using MADD Polyclonal Antibody diluted at 1:1000



Immunofluorescence analysis of A549 cells, using MADD Antibody. The picture on the right is blocked with the synthesized peptide.



Immunohistochemistry analysis of paraffin-embedded human brain tissue, using MADD Antibody. The picture on the right is blocked with the synthesized peptide.