

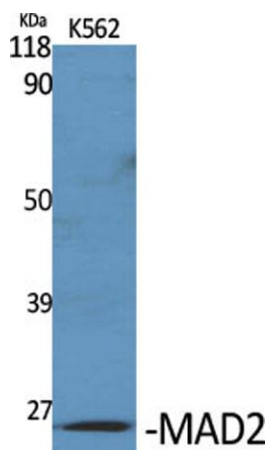
MAD2 rabbit pAb**Cat#: orb765613 (Manual)**

For research use only. Not intended for diagnostic use.

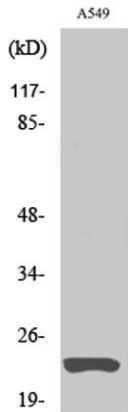
Product Name	MAD2 rabbit pAb
Host species	Rabbit
Applications	WB;IP;ELISA
Species Cross-Reactivity	Human;Rat;Mouse;
Recommended dilutions	Western Blot: 1/500 - 1/2000. IP 1:200-500 ELISA: 1/5000. Not yet tested in other applications.
Immunogen	The antiserum was produced against synthesized peptide derived from human MAD2L1. AA range:91-140
Specificity	MAD2 Polyclonal Antibody detects endogenous levels of MAD2 protein.
Formulation	Liquid in PBS containing 50% glycerol, 0.5% BSA and 0.02% sodium azide..
Storage	Store at -20°C. Avoid repeated freeze-thaw cycles.
Protein Name	Mitotic spindle assembly checkpoint protein MAD2A
Gene Name	MAD2L1
Cellular localization	Nucleus . Chromosome, centromere, kinetochore. Cytoplasm . Cytoplasm, cytoskeleton, spindle pole. Recruited by MAD1L1 to unattached kinetochores (Probable). Recruited to the nuclear pore complex by TPR during interphase. Recruited to kinetochores in late prometaphase after BUB1, CENPE, BUB1B and CENPE. Kinetochore association requires the presence of NEK2. Kinetochore association is repressed by UBD. Sequestered to the cytoplasm upon interaction with isoform 3 of MAD1L1 (PubMed:19010891)..

Purification	The antibody was affinity-purified from rabbit antiserum by affinity-chromatography using epitope-specific immunogen.
Clonality	Polyclonal
Concentration	1 mg/ml
Observed band	25kD
Human Gene ID	4085
Human Swiss-Prot Number	Q13257
Alternative Names	MAD2L1; MAD2; Mitotic spindle assembly checkpoint protein MAD2A; HsMAD2; Mitotic arrest deficient 2-like protein 1; MAD2-like protein 1

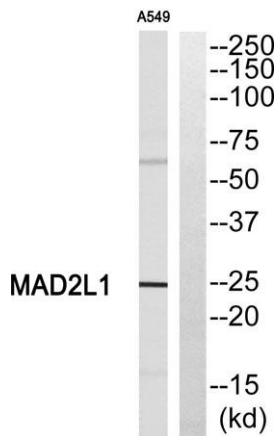
Background MAD2L1 is a component of the mitotic spindle assembly checkpoint that prevents the onset of anaphase until all chromosomes are properly aligned at the metaphase plate. MAD2L1 is related to the MAD2L2 gene located on chromosome 1. A MAD2 pseudogene has been mapped to chromosome 14. [provided by RefSeq, Jul 2008],



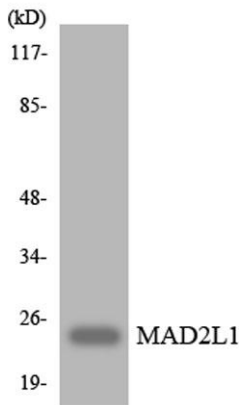
Western Blot analysis of various cells using MAD2 Polyclonal Antibody diluted at 1:1000



Western Blot analysis of A549 cells using MAD2 Polyclonal Antibody diluted at 1:1000



Western blot analysis of MAD2L1 Antibody. The lane on the right is blocked with the MAD2L1 peptide.



Western blot analysis of the lysates from HUVEC cells using MAD2L1 antibody.