

**LPAAT- $\delta$  rabbit pAb****Cat#: orb765597 (Manual)**

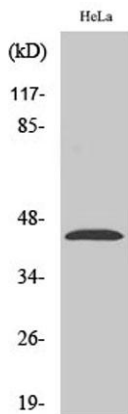
For research use only. Not intended for diagnostic use.

<b>Product Name</b>	LPAAT- $\delta$ rabbit pAb
<b>Host species</b>	Rabbit
<b>Applications</b>	WB;IHC
<b>Species Cross-Reactivity</b>	Human;Mouse;Rat
<b>Recommended dilutions</b>	WB 1:500-2000;IHC-p 1:50-300
<b>Immunogen</b>	The antiserum was produced against synthesized peptide derived from human AGPAT4. AA range:151-200
<b>Specificity</b>	LPAAT- $\delta$ Polyclonal Antibody detects endogenous levels of LPAAT- $\delta$ protein.
<b>Formulation</b>	Liquid in PBS containing 50% glycerol, 0.5% BSA and 0.02% sodium azide..
<b>Storage</b>	Store at -20°C. Avoid repeated freeze-thaw cycles.
<b>Protein Name</b>	1-acyl-sn-glycerol-3-phosphate acyltransferase delta
<b>Gene Name</b>	AGPAT4
<b>Cellular localization</b>	Endoplasmic reticulum membrane ; Multi-pass membrane protein .
<b>Purification</b>	The antibody was affinity-purified from rabbit antiserum by affinity-chromatography using epitope-specific immunogen.
<b>Clonality</b>	Polyclonal

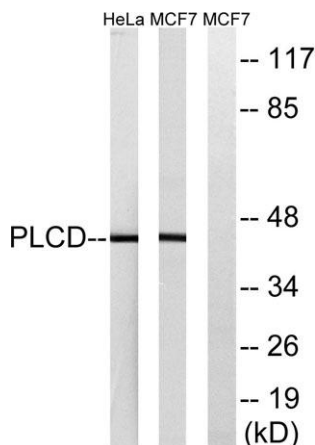
<b>Concentration</b>	1 mg/ml
<b>Observed band</b>	44kD
<b>Human Gene ID</b>	56895
<b>Human Swiss-Prot Number</b>	Q9NRZ5
<b>Alternative Names</b>	AGPAT4; 1-acyl-sn-glycerol-3-phosphate acyltransferase delta; 1-acylglycerol-3-phosphate O-acyltransferase 4; 1-AGP acyltransferase 4; 1-AGPAT 4; Lysophosphatidic acid acyltransferase delta; LPAAT-delta

**Background**

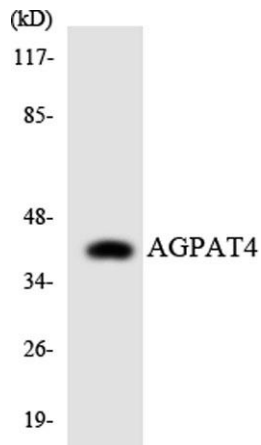
This gene encodes a member of the 1-acylglycerol-3-phosphate O-acyltransferase family. This integral membrane protein converts lysophosphatidic acid to phosphatidic acid, the second step in de novo phospholipid biosynthesis. [provided by RefSeq, Jul 2008],



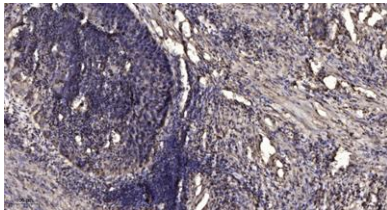
**Western Blot analysis of various cells using LPAAT- $\delta$  Polyclonal Antibody diluted at 1:500**



**Western blot analysis of lysates from HeLa and MCF-7 cells, using AGPAT4 Antibody. The lane on the right is blocked with the synthesized peptide.**



Western blot analysis of the lysates from HeLa cells using AGPAT4 antibody.



Immunohistochemical analysis of paraffin-embedded human Squamous cell carcinoma of lung. 1, Antibody was diluted at 1:200(4° overnight). 2, Tris-EDTA,pH9.0 was used for antigen retrieval. 3,Secondary antibody was diluted at 1:200(room temperature, 45min).