

LAT rabbit pAb**Cat#: orb765577 (Manual)**

For research use only. Not intended for diagnostic use.

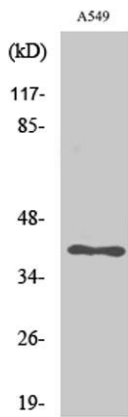
Product Name	LAT rabbit pAb
Host species	Rabbit
Applications	WB;ELISA;IHC
Species Cross-Reactivity	Human;Mouse;Rat
Recommended dilutions	WB 1:500-2000;IHC-p 1:50-300; ELISA 2000-20000
Immunogen	The antiserum was produced against synthesized peptide derived from human LAT. AA range:171-220
Specificity	LAT Polyclonal Antibody detects endogenous levels of LAT protein.
Formulation	Liquid in PBS containing 50% glycerol, 0.5% BSA and 0.02% sodium azide..
Storage	Store at -20°C. Avoid repeated freeze-thaw cycles.
Protein Name	Linker for activation of T-cells family member 1
Gene Name	LAT
Cellular localization	Cell membrane ; Single-pass type III membrane protein . Present in lipid rafts.
Purification	The antibody was affinity-purified from rabbit antiserum by affinity-chromatography using epitope-specific immunogen.
Clonality	Polyclonal

Explore. Bioreagents.

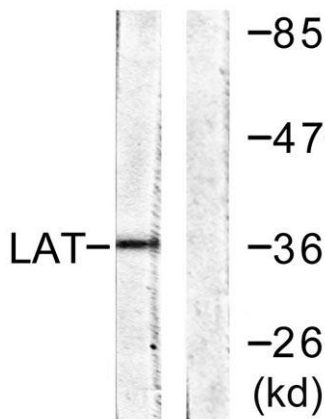
Concentration	1 mg/ml
Observed band	38kD
Human Gene ID	27040
Human Swiss-Prot Number	O43561
Alternative Names	LAT; Linker for activation of T-cells family member 1; 36 kDa phosphotyrosine adapter protein; pp36; p36-38

Background

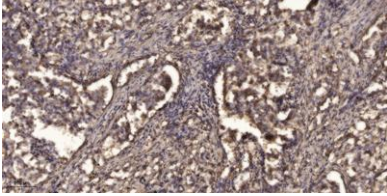
The protein encoded by this gene is phosphorylated by ZAP-70/Syk protein tyrosine kinases following activation of the T-cell antigen receptor (TCR) signal transduction pathway. This transmembrane protein localizes to lipid rafts and acts as a docking site for SH2 domain-containing proteins. Upon phosphorylation, this protein recruits multiple adaptor proteins and downstream signaling molecules into multimolecular signaling complexes located near the site of TCR engagement. Alternative splicing results in multiple transcript variants encoding different isoforms. [provided by RefSeq, Jul 2008],



Western Blot analysis of various cells using LAT Polyclonal Antibody



Western blot analysis of lysates from A549 cells, using LAT Antibody. The lane on the right is blocked with the synthesized peptide.



Immunohistochemical analysis of paraffin-embedded human Squamous cell carcinoma of lung. 1, Antibody was diluted at 1:200(4° overnight). 2, Tris-EDTA,pH9.0 was used for antigen retrieval. 3,Secondary antibody was diluted at 1:200(room temperature, 45min).