

**Laminin  $\alpha$ -4 rabbit pAb****Cat#: orb765573 (Manual)**

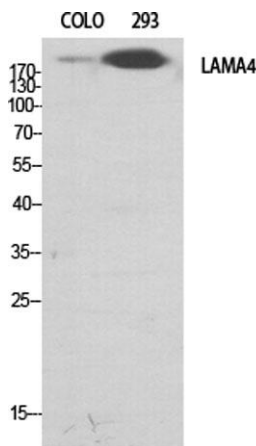
For research use only. Not intended for diagnostic use.

<b>Product Name</b>	Laminin $\alpha$ -4 rabbit pAb
<b>Host species</b>	Rabbit
<b>Applications</b>	WB;IHC;IF;ELISA
<b>Species Cross-Reactivity</b>	Human;Mouse
<b>Recommended dilutions</b>	Western Blot: 1/500 - 1/2000. Immunohistochemistry: 1/100 - 1/300. Immunofluorescence: 1/200 - 1/1000. ELISA: 1/40000. Not yet tested in other applications.
<b>Immunogen</b>	The antiserum was produced against synthesized peptide derived from human LAMA4. AA range:481-530
<b>Specificity</b>	Laminin $\alpha$ -4 Polyclonal Antibody detects endogenous levels of Laminin $\alpha$ -4 protein.
<b>Formulation</b>	Liquid in PBS containing 50% glycerol, 0.5% BSA and 0.02% sodium azide..
<b>Storage</b>	Store at -20°C. Avoid repeated freeze-thaw cycles.
<b>Protein Name</b>	Laminin subunit alpha-4
<b>Gene Name</b>	LAMA4
<b>Cellular localization</b>	Secreted, extracellular space, extracellular matrix, basement membrane. Major component.
<b>Purification</b>	The antibody was affinity-purified from rabbit antiserum by affinity-chromatography using epitope-specific immunogen.
<b>Clonality</b>	Polyclonal

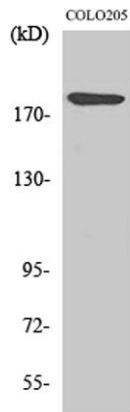
<b>Concentration</b>	1 mg/ml
<b>Observed band</b>	203kD
<b>Human Gene ID</b>	3910
<b>Human Swiss-Prot Number</b>	Q16363
<b>Alternative Names</b>	LAMA4; Laminin subunit alpha-4; Laminin-14 subunit alpha; Laminin-8 subunit alpha; Laminin-9 subunit alpha

**Background**

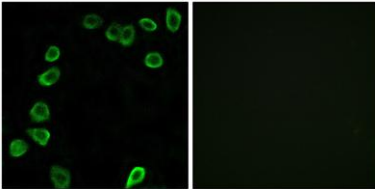
Laminins, a family of extracellular matrix glycoproteins, are the major noncollagenous constituent of basement membranes. They have been implicated in a wide variety of biological processes including cell adhesion, differentiation, migration, signaling, neurite outgrowth and metastasis. Laminins are composed of 3 non identical chains: laminin alpha, beta and gamma (formerly A, B1, and B2, respectively) and they form a cruciform structure consisting of 3 short arms, each formed by a different chain, and a long arm composed of all 3 chains. Each laminin chain is a multidomain protein encoded by a distinct gene. Several isoforms of each chain have been described. Different alpha, beta and gamma chain isomers combine to give rise to different heterotrimeric laminin isoforms which are designated by Arabic numerals in the order of their discovery, i.e. alpha1beta1gamma1 heterotrimer is laminin 1. The bio



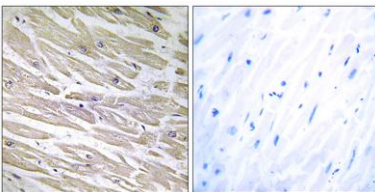
**Western Blot analysis of various cells using Laminin  $\alpha$ -4 Polyclonal Antibody diluted at 1:500**



**Western Blot analysis of 293 cells using Laminin  $\alpha$ -4 Polyclonal Antibody diluted at 1:500**



**Immunofluorescence analysis of NIH/3T3 cells, using LAMA4 Antibody. The picture on the right is blocked with the synthesized peptide.**



**Immunohistochemistry analysis of paraffin-embedded human heart tissue, using LAMA4 Antibody. The picture on the right is blocked with the synthesized peptide.**