

**Kv3.4 rabbit pAb****Cat#: orb765566 (Manual)**

For research use only. Not intended for diagnostic use.

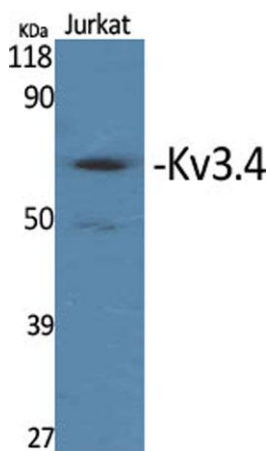
<b>Product Name</b>	Kv3.4 rabbit pAb
<b>Host species</b>	Rabbit
<b>Applications</b>	WB;IHC;IF;ELISA
<b>Species Cross-Reactivity</b>	Human;Mouse;Monkey
<b>Recommended dilutions</b>	Western Blot: 1/500 - 1/2000. Immunohistochemistry: 1/100 - 1/300. Immunofluorescence: 1/200 - 1/1000. ELISA: 1/20000. Not yet tested in other applications.
<b>Immunogen</b>	The antiserum was produced against synthesized peptide derived from human KCNC4. AA range:1-50
<b>Specificity</b>	Kv3.4 Polyclonal Antibody detects endogenous levels of Kv3.4 protein.
<b>Formulation</b>	Liquid in PBS containing 50% glycerol, 0.5% BSA and 0.02% sodium azide..
<b>Storage</b>	Store at -20°C. Avoid repeated freeze-thaw cycles.
<b>Protein Name</b>	Potassium voltage-gated channel subfamily C member 4
<b>Gene Name</b>	KCNC4
<b>Cellular localization</b>	Membrane; Multi-pass membrane protein.
<b>Purification</b>	The antibody was affinity-purified from rabbit antiserum by affinity-chromatography using epitope-specific immunogen.
<b>Clonality</b>	Polyclonal

Explore. Bioreagents.

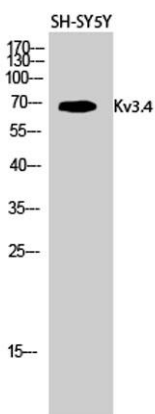
<b>Concentration</b>	1 mg/ml
<b>Observed band</b>	70kD
<b>Human Gene ID</b>	3749
<b>Human Swiss-Prot Number</b>	Q03721
<b>Alternative Names</b>	KCNC4; Potassium voltage-gated channel subfamily C member 4; KSHIIIC; Voltage-gated potassium channel subunit Kv3.4

**Background**

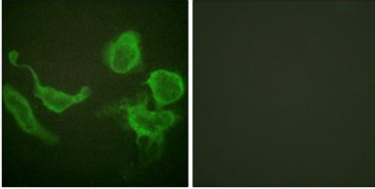
The Shaker gene family of *Drosophila* encodes components of voltage-gated potassium channels and is comprised of four subfamilies. Based on sequence similarity, this gene is similar to the Shaw subfamily. The protein encoded by this gene belongs to the delayed rectifier class of channel proteins and is an integral membrane protein that mediates the voltage-dependent potassium ion permeability of excitable membranes. It generates atypical voltage-dependent transient current that may be important for neuronal excitability. Multiple transcript variants have been found for this gene. [provided by RefSeq, Jul 2010],



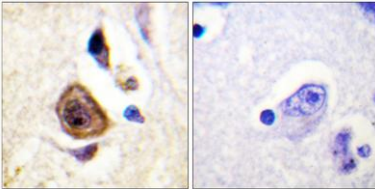
**Western Blot analysis of various cells using Kv3.4 Polyclonal Antibody diluted at 1:500**



**Western Blot analysis of SH-SY5Y cells using Kv3.4 Polyclonal Antibody diluted at 1:500**



**Immunofluorescence analysis of HeLa cells, using Kv3.4/KCNC4 Antibody. The picture on the right is blocked with the synthesized peptide.**



**Immunohistochemistry analysis of paraffin-embedded human brain, using Kv3.4/KCNC4 Antibody. The picture on the right is blocked with the synthesized peptide.**