

KV3.1 rabbit pAb**Cat#: orb765564 (Manual)**

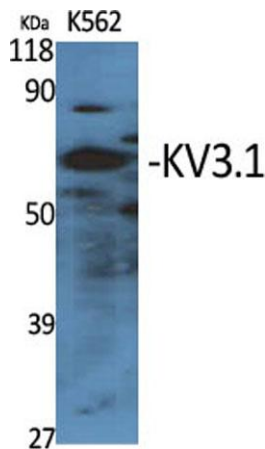
For research use only. Not intended for diagnostic use.

| | |
|---------------------------------|--|
| Product Name | KV3.1 rabbit pAb |
| Host species | Rabbit |
| Applications | WB;IHC;IF;ELISA |
| Species Cross-Reactivity | Human;Mouse;Rat |
| Recommended dilutions | Western Blot: 1/500 - 1/2000. Immunohistochemistry: 1/100 - 1/300. ELISA: 1/5000. Not yet tested in other applications. |
| Immunogen | Synthesized peptide derived from KV3.1 . at AA range: 190-270 |
| Specificity | KV3.1 Polyclonal Antibody detects endogenous levels of KV3.1 protein. |
| Formulation | Liquid in PBS containing 50% glycerol, 0.5% BSA and 0.02% sodium azide.. |
| Storage | Store at -20°C. Avoid repeated freeze-thaw cycles. |
| Protein Name | Potassium voltage-gated channel subfamily C member 1 |
| Gene Name | KCNC1 |
| Cellular localization | Cell membrane ; Multi-pass membrane protein . Cell projection, axon . Cell junction, synapse, presynaptic cell membrane . Localizes in parallel fiber membranes, distributed on the perisynaptic and extrasynaptic membranes away from the active zones. . |
| Purification | The antibody was affinity-purified from rabbit antiserum by affinity-chromatography using epitope-specific immunogen. |

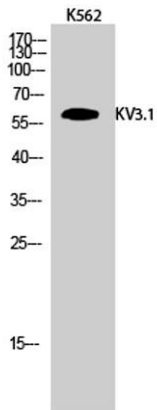
| | |
|--------------------------------|---|
| Clonality | Polyclonal |
| Concentration | 1 mg/ml |
| Observed band | 60kD |
| Human Gene ID | 3746 |
| Human Swiss-Prot Number | P48547 |
| Alternative Names | KCNC1; Potassium voltage-gated channel subfamily C member 1; NGK2; Voltage-gated potassium channel subunit Kv3.1; Voltage-gated potassium channel subunit Kv4 |

Background

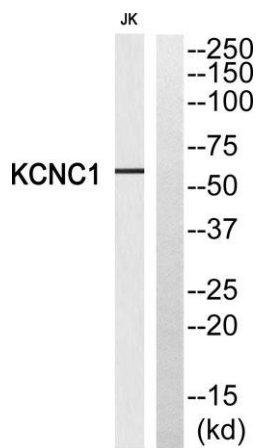
This gene encodes a member of a family of integral membrane proteins that mediate the voltage-dependent potassium ion permeability of excitable membranes. Alternative splicing is thought to result in two transcript variants encoding isoforms that differ at their C-termini. These isoforms have had conflicting names in the literature: the longer isoform has been called both "b" and "alpha", while the shorter isoform has been called both "a" and "beta" (PMIDs 1432046, 12091563). [provided by RefSeq, Oct 2014],



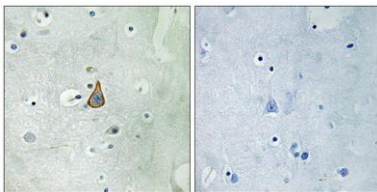
Western Blot analysis of various cells using KV3.1 Polyclonal Antibody



Western Blot analysis of K562 cells using KV3.1 Polyclonal Antibody



Western blot analysis of KCNC1 Antibody. The lane on the right is blocked with the KCNC1 peptide.



Immunohistochemistry analysis of paraffin-embedded human brain, using KCNC1 Antibody. The lane on the right is blocked with the KCNC1 peptide.