

JAB1 rabbit pAb**Cat#: orb765529 (Manual)**

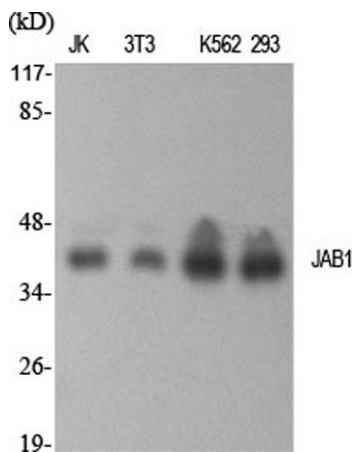
For research use only. Not intended for diagnostic use.

Product Name	JAB1 rabbit pAb
Host species	Rabbit
Applications	WB;IHC;IF;ELISA
Species Cross-Reactivity	Human;Mouse
Recommended dilutions	Western Blot: 1/500 - 1/2000. Immunohistochemistry: 1/100 - 1/300. ELISA: 1/5000. Not yet tested in other applications.
Immunogen	The antiserum was produced against synthesized peptide derived from human COPS5. AA range:161-210
Specificity	JAB1 Polyclonal Antibody detects endogenous levels of JAB1 protein.
Formulation	Liquid in PBS containing 50% glycerol, 0.5% BSA and 0.02% sodium azide..
Storage	Store at -20°C. Avoid repeated freeze-thaw cycles.
Protein Name	COP9 signalosome complex subunit 5
Gene Name	COPS5
Cellular localization	Cytoplasm, cytosol . Nucleus . Cytoplasm, perinuclear region . Cytoplasmic vesicle, secretory vesicle, synaptic vesicle . Nuclear localization is diminished in the presence of IFIT3. .
Purification	The antibody was affinity-purified from rabbit antiserum by affinity-chromatography using epitope-specific immunogen.

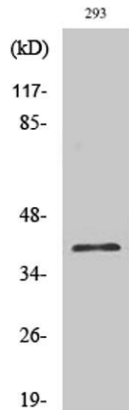
Clonality	Polyclonal
Concentration	1 mg/ml
Observed band	38kD
Human Gene ID	10987
Human Swiss-Prot Number	Q92905
Alternative Names	COPS5; CSN5; JAB1; COP9 signalosome complex subunit 5; SGN5; Signalosome subunit 5; Jun activation domain-binding protein 1

Background

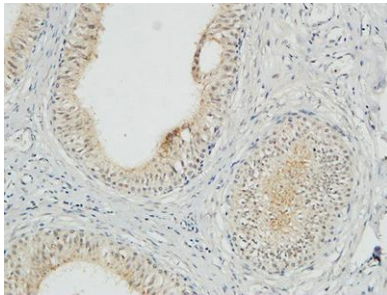
The protein encoded by this gene is one of the eight subunits of COP9 signalosome, a highly conserved protein complex that functions as an important regulator in multiple signaling pathways. The structure and function of COP9 signalosome is similar to that of the 19S regulatory particle of 26S proteasome. COP9 signalosome has been shown to interact with SCF-type E3 ubiquitin ligases and act as a positive regulator of E3 ubiquitin ligases. This protein is reported to be involved in the degradation of cyclin-dependent kinase inhibitor CDKN1B/p27Kip1. It is also known to be an activator that increases the specificity of JUN/AP1 transcription factors. [provided by RefSeq, Jul 2008].



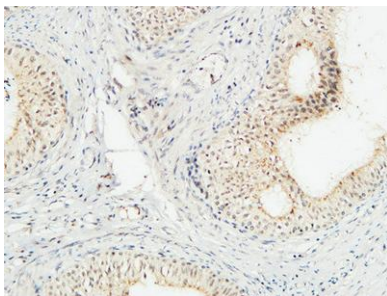
Western Blot analysis of various cells using JAB1 Polyclonal Antibody



Western Blot analysis of K562 cells using JAB1 Polyclonal Antibody



Immunohistochemical analysis of paraffin-embedded Human testis. 1, Antibody was diluted at 1:100(4° overnight). 2, High-pressure and temperature EDTA, pH8.0 was used for antigen retrieval. 3,Secondary antibody was diluted at 1:200(room temperature, 30min).



Immunohistochemical analysis of paraffin-embedded Human testis. 1, Antibody was diluted at 1:100(4° overnight). 2, High-pressure and temperature EDTA, pH8.0 was used for antigen retrieval. 3,Secondary antibody was diluted at 1:200(room temperature, 30min).