

IRX2 rabbit pAb**Cat#: orb765525 (Manual)**

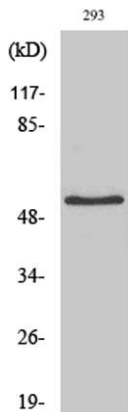
For research use only. Not intended for diagnostic use.

Product Name	IRX2 rabbit pAb
Host species	Rabbit
Applications	WB;IHC;IF;ELISA
Species Cross-Reactivity	Human;Rat;Mouse;
Recommended dilutions	Western Blot: 1/500 - 1/2000. Immunohistochemistry: 1/100 - 1/300. Immunofluorescence: 1/200 - 1/1000. ELISA: 1/20000. Not yet tested in other applications.
Immunogen	The antiserum was produced against synthesized peptide derived from human IRX2. AA range:231-280
Specificity	IRX2 Polyclonal Antibody detects endogenous levels of IRX2 protein.
Formulation	Liquid in PBS containing 50% glycerol, 0.5% BSA and 0.02% sodium azide..
Storage	Store at -20°C. Avoid repeated freeze-thaw cycles.
Protein Name	Iroquois-class homeodomain protein IRX-2
Gene Name	IRX2
Cellular localization	Nucleus .
Purification	The antibody was affinity-purified from rabbit antiserum by affinity-chromatography using epitope-specific immunogen.
Clonality	Polyclonal

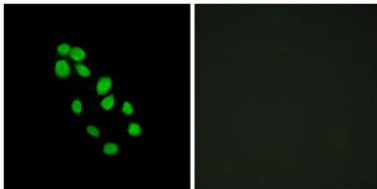
Concentration	1 mg/ml
Observed band	50kD
Human Gene ID	153572
Human Swiss-Prot Number	Q9BZI1
Alternative Names	IRX2; IRXA2; Iroquois-class homeodomain protein IRX-2; Homeodomain protein IRXA2; Iroquois homeobox protein 2

Background

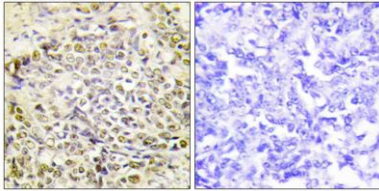
IRX2 is a member of the Iroquois homeobox gene family. Members of this family appear to play multiple roles during pattern formation of vertebrate embryos.[supplied by OMIM, Apr 2004],



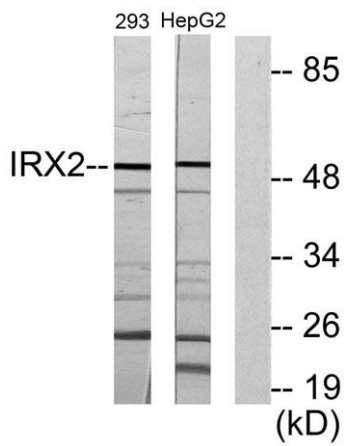
Western Blot analysis of various cells using IRX2 Polyclonal Antibody cells nucleus extracted by Minute™ Cytoplasmic and Nuclear Fractionation kit (SC-003, Inventibiotec, MN, USA).



Immunofluorescence analysis of HepG2 cells, using IRX2 Antibody. The picture on the right is blocked with the synthesized peptide.



Immunohistochemistry analysis of paraffin-embedded human lung carcinoma tissue, using IRX2 Antibody. The picture on the right is blocked with the synthesized peptide.



Western blot analysis of lysates from 293 and HepG2 cells, using IRX2 Antibody. The lane on the right is blocked with the synthesized peptide.