

**IRTKS rabbit pAb****Cat#: orb765524 (Manual)**

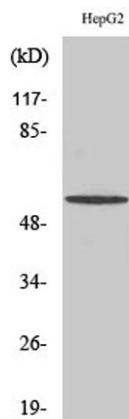
For research use only. Not intended for diagnostic use.

<b>Product Name</b>	IRTKS rabbit pAb
<b>Host species</b>	Rabbit
<b>Applications</b>	WB;IHC;IF;ELISA
<b>Species Cross-Reactivity</b>	Human;Mouse;Rat
<b>Recommended dilutions</b>	Western Blot: 1/500 - 1/2000. Immunohistochemistry: 1/100 - 1/300. ELISA: 1/5000. Not yet tested in other applications.
<b>Immunogen</b>	The antiserum was produced against synthesized peptide derived from human BAIAP2L1. AA range:111-160
<b>Specificity</b>	IRTKS Polyclonal Antibody detects endogenous levels of IRTKS protein.
<b>Formulation</b>	Liquid in PBS containing 50% glycerol, 0.5% BSA and 0.02% sodium azide..
<b>Storage</b>	Store at -20°C. Avoid repeated freeze-thaw cycles.
<b>Protein Name</b>	Brain-specific angiogenesis inhibitor 1-associated protein 2-like protein 1
<b>Gene Name</b>	BAIAP2L1
<b>Cellular localization</b>	Cytoplasm, cytoskeleton . Recruited to actin pedestals that are formed upon infection by bacteria at bacterial attachment sites.
<b>Purification</b>	The antibody was affinity-purified from rabbit antiserum by affinity-chromatography using epitope-specific immunogen.
<b>Clonality</b>	Polyclonal

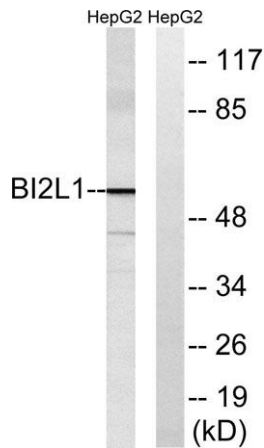
<b>Concentration</b>	1 mg/ml
<b>Observed band</b>	57kD
<b>Human Gene ID</b>	55971
<b>Human Swiss-Prot Number</b>	Q9UHR4
<b>Alternative Names</b>	BAIAP2L1; IRTKS; Brain-specific angiogenesis inhibitor 1-associated protein 2-like protein 1; BAI1-associated protein 2-like protein 1; Insulin receptor tyrosine kinase substrate

**Background**

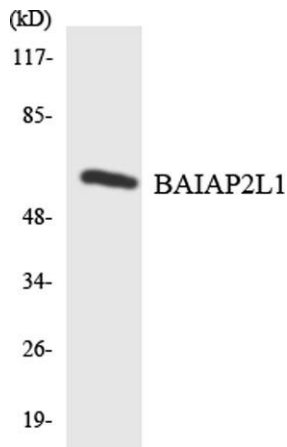
This gene encodes a member of the IMD (IRSp53/MIM homology domain) family. Members of this family can be subdivided in two groups, the IRSp53-like and MIM-like, based on the presence or absence of the SH3 (Src homology 3) domain. The protein encoded by this gene contains a conserved IMD, also known as F-actin bundling domain, at the N-terminus, and a canonical SH3 domain near the C-terminus, so it belongs to the IRSp53-like group. This protein is the substrate for insulin receptor tyrosine kinase and binds to the small GTPase Rac. It is involved in signal transduction pathways that link deformation of the plasma membrane and remodeling of the actin cytoskeleton. It also promotes actin assembly and membrane protrusions when overexpressed in mammalian cells, and is essential to the formation of a potent actin assembly complex during EHEC (Enterohemorrhagic Escherichia coli) pedestal fo



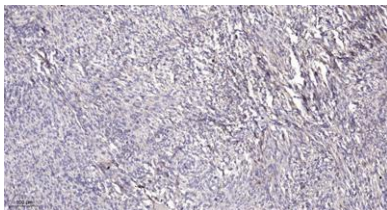
**Western Blot analysis of various cells using IRTKS Polyclonal Antibody diluted at 1:2000**



Western blot analysis of lysates from HepG2 cells, using BAIAP2L1 Antibody. The lane on the right is blocked with the synthesized peptide.



Western blot analysis of the lysates from K562 cells using BAIAP2L1 antibody.



Immunohistochemical analysis of paraffin-embedded human Colon cancer. 1, Antibody was diluted at 1:200(4° overnight). 2, Tris-EDTA,pH9.0 was used for antigen retrieval. 3,Secondary antibody was diluted at 1:200(room temperature, 45min).