

**IQGAP1 rabbit pAb****Cat#: orb765514 (Manual)**

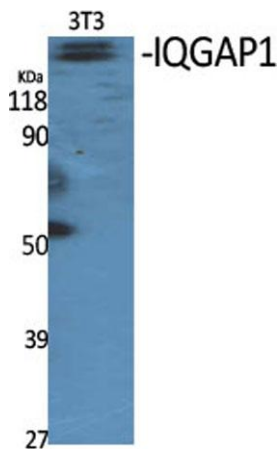
For research use only. Not intended for diagnostic use.

<b>Product Name</b>	IQGAP1 rabbit pAb
<b>Host species</b>	Rabbit
<b>Applications</b>	WB;IHC
<b>Species Cross-Reactivity</b>	Human;Mouse
<b>Recommended dilutions</b>	WB 1:500-2000;IHC-p 1:50-300
<b>Immunogen</b>	The antiserum was produced against synthesized peptide derived from human IQGAP1. AA range:247-296
<b>Specificity</b>	IQGAP1 Polyclonal Antibody detects endogenous levels of IQGAP1 protein.
<b>Formulation</b>	Liquid in PBS containing 50% glycerol, 0.5% BSA and 0.02% sodium azide..
<b>Storage</b>	Store at -20°C. Avoid repeated freeze-thaw cycles.
<b>Protein Name</b>	Ras GTPase-activating-like protein IQGAP1
<b>Gene Name</b>	IQGAP1
<b>Cellular localization</b>	Cell membrane . Nucleus . Cytoplasm . Subcellular distribution is regulated by the cell cycle, nuclear levels increase at G1/S phase (PubMed:20883816). .
<b>Purification</b>	The antibody was affinity-purified from rabbit antiserum by affinity-chromatography using epitope-specific immunogen.

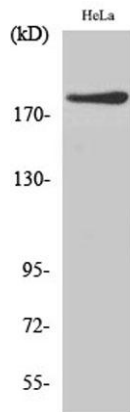
<b>Clonality</b>	Polyclonal
<b>Concentration</b>	1 mg/ml
<b>Observed band</b>	190kD
<b>Human Gene ID</b>	8826
<b>Human Swiss-Prot Number</b>	P46940
<b>Alternative Names</b>	IQGAP1; KIAA0051; Ras GTPase-activating-like protein IQGAP1; p195

## Background

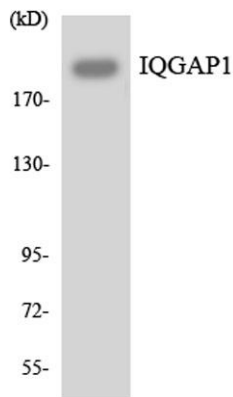
IQ motif containing GTPase activating protein 1(IQGAP1) Homo sapiens  
This gene encodes a member of the IQGAP family. The protein contains four IQ domains, one calponin homology domain, one Ras-GAP domain and one WW domain. It interacts with components of the cytoskeleton, with cell adhesion molecules, and with several signaling molecules to regulate cell morphology and motility. Expression of the protein is upregulated by gene amplification in two gastric cancer cell lines. [provided by RefSeq, Jul 2008],



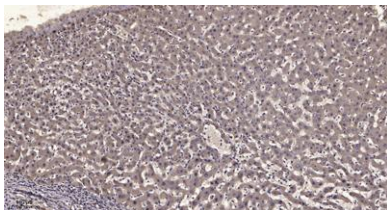
**Western Blot analysis of various cells using IQGAP1 Polyclonal Antibody diluted at 1:1000**



**Western Blot analysis of HeLa cells using IQGAP1 Polyclonal Antibody diluted at 1:1000**



**Western blot analysis of the lysates from K562 cells using IQGAP1 antibody.**



**Immunohistochemical analysis of paraffin-embedded human liver cancer. 1, Antibody was diluted at 1:200(4° overnight). 2, Tris-EDTA,pH9.0 was used for antigen retrieval. 3,Secondary antibody was diluted at 1:200(room temperature, 45min).**