

Involucrin rabbit pAb**Cat#: orb765509 (Manual)**

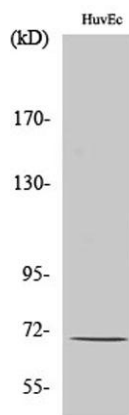
For research use only. Not intended for diagnostic use.

Product Name	Involucrin rabbit pAb
Host species	Rabbit
Applications	WB;IHC;IF;ELISA
Species Cross-Reactivity	Human;Rat;Mouse;
Recommended dilutions	Western Blot: 1/500 - 1/2000. Immunohistochemistry: 1/100 - 1/300. ELISA: 1/20000. Not yet tested in other applications.
Immunogen	The antiserum was produced against synthesized peptide derived from human Involucrin. AA range:536-585
Specificity	Involucrin Polyclonal Antibody detects endogenous levels of Involucrin protein.
Formulation	Liquid in PBS containing 50% glycerol, 0.5% BSA and 0.02% sodium azide..
Storage	Store at -20°C. Avoid repeated freeze-thaw cycles.
Protein Name	Involucrin
Gene Name	IVL
Cellular localization	Cytoplasm. Constituent of the scaffolding of the cornified envelope.
Purification	The antibody was affinity-purified from rabbit antiserum by affinity-chromatography using epitope-specific immunogen.
Clonality	Polyclonal

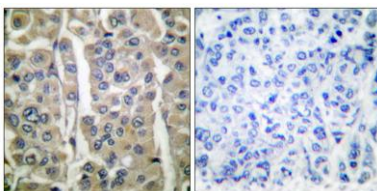
Concentration	1 mg/ml
Observed band	68kD
Human Gene ID	3713
Human Swiss-Prot Number	P07476
Alternative Names	IVL; Involucrin

Background

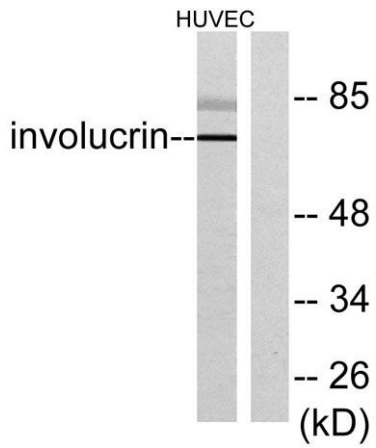
involucrin(IVL) Homo sapiens Involucrin, a component of the keratinocyte crosslinked envelope, is found in the cytoplasm and crosslinked to membrane proteins by transglutaminase. This gene is mapped to 1q21, among calpactin I light chain, trichohyalin, profillaggrin, loricrin, and calyculin. [provided by RefSeq, Jul 2008].



Western Blot analysis of various cells using Involucrin Polyclonal Antibody



Immunohistochemistry analysis of paraffin-embedded human breast carcinoma tissue, using Involucrin Antibody. The picture on the right is blocked with the synthesized peptide.



Western blot analysis of lysates from HUVEC cells, using Involucrin Antibody. The lane on the right is blocked with the synthesized peptide.