

**Inhibin  $\beta$ -C rabbit pAb****Cat#: orb765498 (Manual)**

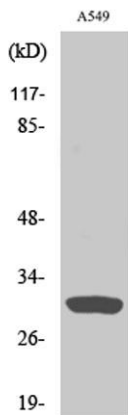
For research use only. Not intended for diagnostic use.

<b>Product Name</b>	Inhibin $\beta$ -C rabbit pAb
<b>Host species</b>	Rabbit
<b>Applications</b>	WB;IHC;IF;ELISA
<b>Species Cross-Reactivity</b>	Human;Rat;Mouse;
<b>Recommended dilutions</b>	Western Blot: 1/500 - 1/2000. Immunohistochemistry: 1/100 - 1/300. ELISA: 1/5000. Not yet tested in other applications.
<b>Immunogen</b>	The antiserum was produced against synthesized peptide derived from human Inhibin beta-C. AA range:80-129
<b>Specificity</b>	Inhibin $\beta$ -C Polyclonal Antibody detects endogenous levels of Inhibin $\beta$ -C protein.
<b>Formulation</b>	Liquid in PBS containing 50% glycerol, 0.5% BSA and 0.02% sodium azide..
<b>Storage</b>	Store at -20°C. Avoid repeated freeze-thaw cycles.
<b>Protein Name</b>	Inhibin beta C chain
<b>Gene Name</b>	INHBC
<b>Cellular localization</b>	Secreted .
<b>Purification</b>	The antibody was affinity-purified from rabbit antiserum by affinity-chromatography using epitope-specific immunogen.
<b>Clonality</b>	Polyclonal

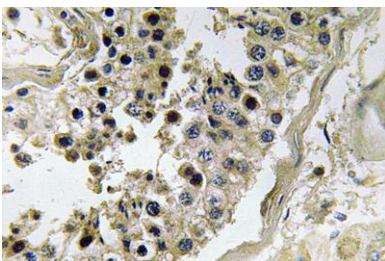
<b>Concentration</b>	1 mg/ml
<b>Observed band</b>	30kD
<b>Human Gene ID</b>	3626
<b>Human Swiss-Prot Number</b>	P55103
<b>Alternative Names</b>	INHBC; Inhibin beta C chain; Activin beta-C chain

**Background**

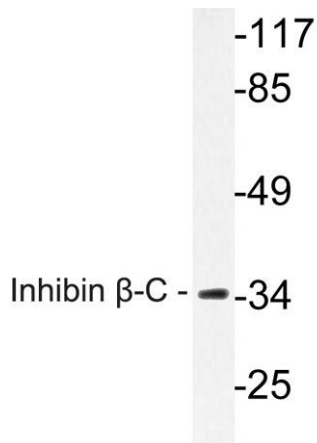
This gene encodes a member of the TGF-beta (transforming growth factor-beta) superfamily of proteins. The encoded preproprotein is proteolytically processed to generate a subunit of homodimeric and heterodimeric activin complexes. The heterodimeric complex may function in the inhibition of activin A signaling. Transgenic mice overexpressing this gene exhibit defects in testis, liver and prostate. [provided by RefSeq, Aug 2016],



**Western Blot analysis of various cells using Inhibin  $\beta$ -C Polyclonal Antibody**



**Immunohistochemistry analysis of Inhibin  $\beta$ -C antibody in paraffin-embedded human testis tissue.**



Western blot analysis of lysate from A549 cells, using Inhibin  $\beta$ -C antibody.