

IL-8 rabbit pAb**Cat#: orb765495 (Manual)**

For research use only. Not intended for diagnostic use.

Product Name	IL-8 rabbit pAb
Host species	Rabbit
Applications	WB;IHC;IF;ELISA
Species Cross-Reactivity	Human
Recommended dilutions	Western Blot: 1/500 - 1/2000. Immunohistochemistry: 1/100 - 1/300. ELISA: 1/20000. Not yet tested in other applications.
Immunogen	The antiserum was produced against synthesized peptide derived from human IL-8. AA range:19-68
Specificity	IL-8 Polyclonal Antibody detects endogenous levels of IL-8 protein.
Formulation	Liquid in PBS containing 50% glycerol, 0.5% BSA and 0.02% sodium azide..
Storage	Store at -20°C. Avoid repeated freeze-thaw cycles.
Protein Name	Interleukin-8
Gene Name	IL8
Cellular localization	Secreted.
Purification	The antibody was affinity-purified from rabbit antiserum by affinity-chromatography using epitope-specific immunogen.
Clonality	Polyclonal

Explore. Bioreagents.

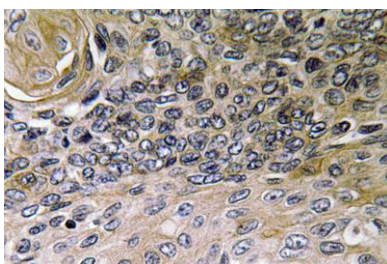
Concentration	1 mg/ml
Observed band	8kD
Human Gene ID	3576
Human Swiss-Prot Number	P10145
Alternative Names	IL8; CXCL8; Interleukin-8; IL-8; C-X-C motif chemokine 8; Emoctakin; Granulocyte chemotactic protein 1; GCP-1; Monocyte-derived neutrophil chemotactic factor; MDNCF; Monocyte-derived neutrophil-activating peptide; MONAP; Neutrophil-activati

Background

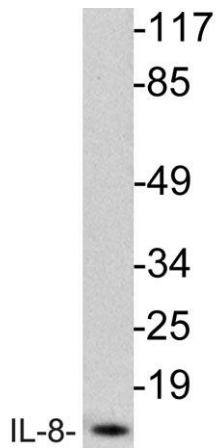
The protein encoded by this gene is a member of the CXC chemokine family. This chemokine is one of the major mediators of the inflammatory response. This chemokine is secreted by several cell types. It functions as a chemoattractant, and is also a potent angiogenic factor. This gene is believed to play a role in the pathogenesis of bronchiolitis, a common respiratory tract disease caused by viral infection. This gene and other ten members of the CXC chemokine gene family form a chemokine gene cluster in a region mapped to chromosome 4q. [provided by RefSeq, Jul 2008],



Western Blot analysis of various cells using IL-8 Polyclonal Antibody



Immunohistochemistry analysis of IL-8 antibody in paraffin-embedded human lung carcinoma tissue.



Western blot analysis of lysate from HeLa cells, using IL-8 antibody.