

IL-7R rabbit pAb**Cat#: orb765494 (Manual)**

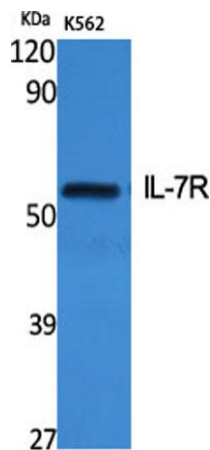
For research use only. Not intended for diagnostic use.

Product Name	IL-7R rabbit pAb
Host species	Rabbit
Applications	WB;ELISA
Species Cross-Reactivity	Human;Mouse;Monkey
Recommended dilutions	Western Blot: 1/500 - 1/2000. ELISA: 1/40000. Not yet tested in other applications.
Immunogen	The antiserum was produced against synthesized peptide derived from human IL-7R/CD127. AA range:410-459
Specificity	IL-7R Polyclonal Antibody detects endogenous levels of IL-7R protein.
Formulation	Liquid in PBS containing 50% glycerol, 0.5% BSA and 0.02% sodium azide..
Storage	Store at -20°C. Avoid repeated freeze-thaw cycles.
Protein Name	Interleukin-7 receptor subunit alpha
Gene Name	IL7R
Cellular localization	[Isoform 1]: Cell membrane; Single-pass type I membrane protein.; [Isoform 3]: Cell membrane; Single-pass type I membrane protein.; [Isoform 4]: Secreted.
Purification	The antibody was affinity-purified from rabbit antiserum by affinity-chromatography using epitope-specific immunogen.

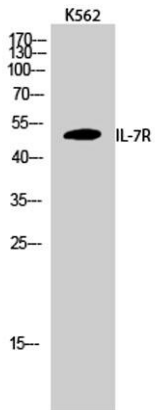
Clonality	Polyclonal
Concentration	1 mg/ml
Observed band	52 60kD
Human Gene ID	3575
Human Swiss-Prot Number	P16871
Alternative Names	IL7R; Interleukin-7 receptor subunit alpha; IL-7 receptor subunit alpha; IL-7R subunit alpha; IL-7R-alpha; IL-7RA; CDw127; CD antigen CD127

Background

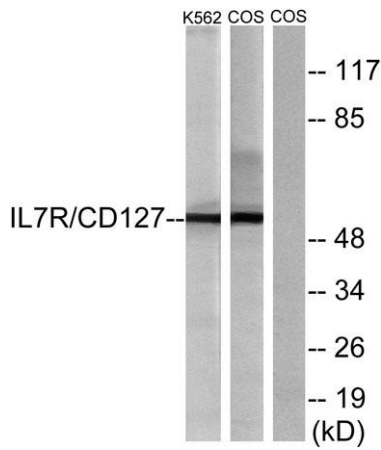
The protein encoded by this gene is a receptor for interleukin 7 (IL7). The function of this receptor requires the interleukin 2 receptor, gamma chain (IL2RG), which is a common gamma chain shared by the receptors of various cytokines, including interleukins 2, 4, 7, 9, and 15. This protein has been shown to play a critical role in V(D)J recombination during lymphocyte development. Defects in this gene may be associated with severe combined immunodeficiency (SCID). Alternatively spliced transcript variants have been found. [provided by RefSeq, Dec 2015],



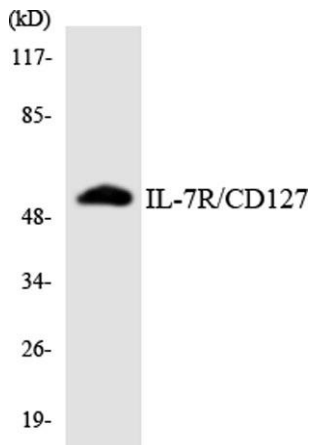
Western Blot analysis of various cells using IL-7R Polyclonal Antibody



Western Blot analysis of K562 cells using IL-7R Polyclonal Antibody



Western blot analysis of lysates from K562 and COS cells, treated with insulin 0.01U/ml 15', using IL-7R/CD127 Antibody. The lane on the right is blocked with the synthesized peptide.



Western blot analysis of the lysates from Jurkat cells using IL-7R/CD127 antibody.