

**IL-4R $\alpha$  rabbit pAb****Cat#: orb765492 (Manual)**

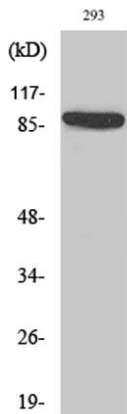
For research use only. Not intended for diagnostic use.

|                                 |   |
|---------------------------------|---|
| <b>Product Name</b>             | IL-4R $\alpha$ rabbit pAb   |
| <b>Host species</b>             | Rabbit  |
| <b>Applications</b>             | WB;IF;ELISA   |
| <b>Species Cross-Reactivity</b> | Human;Mouse   |
| <b>Recommended dilutions</b>    | Western Blot: 1/500 - 1/2000. Immunofluorescence: 1/200 - 1/1000. ELISA: 1/20000. Not yet tested in other applications. |
| <b>Immunogen</b>                | The antiserum was produced against synthesized peptide derived from human IL-4R/CD124. AA range:463-512                 |
| <b>Specificity</b>              | IL-4R $\alpha$ Polyclonal Antibody detects endogenous levels of IL-4R $\alpha$ protein.                                 |
| <b>Formulation</b>              | Liquid in PBS containing 50% glycerol, 0.5% BSA and 0.02% sodium azide..  |
| <b>Storage</b>                  | Store at -20°C. Avoid repeated freeze-thaw cycles.  |
| <b>Protein Name</b>             | Interleukin-4 receptor subunit alpha  |
| <b>Gene Name</b>                | IL4R  |
| <b>Cellular localization</b>    | Cell membrane; Single-pass type I membrane protein.; [Isoform 2]: Secreted.   |
| <b>Purification</b>             | The antibody was affinity-purified from rabbit antiserum by affinity-chromatography using epitope-specific immunogen.   |
| <b>Clonality</b>                | Polyclonal  |

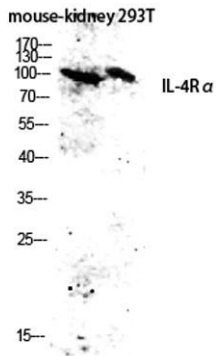
|                                |   |
|--------------------------------|---|
| <b>Concentration</b>           | 1 mg/ml   |
| <b>Observed band</b>           | 90kD  |
| <b>Human Gene ID</b>           | 3566  |
| <b>Human Swiss-Prot Number</b> | P24394  |
| <b>Alternative Names</b>       | IL4R; IL4RA; 582J2.1; Interleukin-4 receptor subunit alpha; IL-4 receptor subunit alpha; IL-4R subunit alpha; IL-4R-alpha; IL-4RA; CD antigen CD124 |

## Background

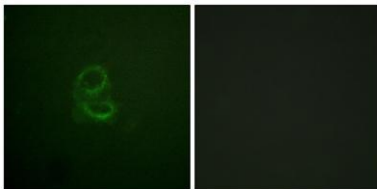
This gene encodes the alpha chain of the interleukin-4 receptor, a type I transmembrane protein that can bind interleukin 4 and interleukin 13 to regulate IgE production. The encoded protein also can bind interleukin 4 to promote differentiation of Th2 cells. A soluble form of the encoded protein can be produced by proteolysis of the membrane-bound protein, and this soluble form can inhibit IL4-mediated cell proliferation and IL5 upregulation by T-cells. Allelic variations in this gene have been associated with atopy, a condition that can manifest itself as allergic rhinitis, sinusitis, asthma, or eczema. Polymorphisms in this gene are also associated with resistance to human immunodeficiency virus type-1 infection. Alternate splicing results in multiple transcript variants. [provided by RefSeq, Apr 2012],



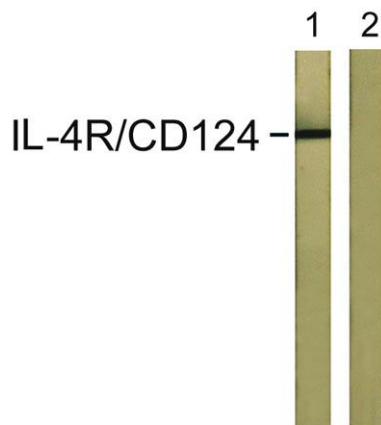
**Western Blot analysis of various cells using IL-4R $\alpha$  Polyclonal Antibody diluted at 1:2000**



Western blot analysis of mouse-kidney 293T lysis using IL-4R $\alpha$  antibody. Antibody was diluted at 1:2000



Immunofluorescence analysis of A549 cells, using IL-4R/CD124 Antibody. The picture on the right is blocked with the synthesized peptide.



Western blot analysis of lysates from 293 cells, using IL-4R/CD124 Antibody. The lane on the right is blocked with the synthesized peptide.