

IL-32 rabbit pAb**Cat#: orb765490 (Manual)**

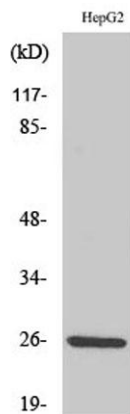
For research use only. Not intended for diagnostic use.

Product Name	IL-32 rabbit pAb
Host species	Rabbit
Applications	WB;IHC;IF;ELISA
Species Cross-Reactivity	Human;Rat;Mouse;
Recommended dilutions	Western Blot: 1/500 - 1/2000. Immunohistochemistry: 1/100 - 1/300. ELISA: 1/40000. Not yet tested in other applications.
Immunogen	The antiserum was produced against synthesized peptide derived from human IL-32. AA range:177-226
Specificity	IL-32 Polyclonal Antibody detects endogenous levels of IL-32 protein.
Formulation	Liquid in PBS containing 50% glycerol, 0.5% BSA and 0.02% sodium azide..
Storage	Store at -20°C. Avoid repeated freeze-thaw cycles.
Protein Name	Interleukin-32
Gene Name	IL32
Cellular localization	Secreted .
Purification	The antibody was affinity-purified from rabbit antiserum by affinity-chromatography using epitope-specific immunogen.
Clonality	Polyclonal

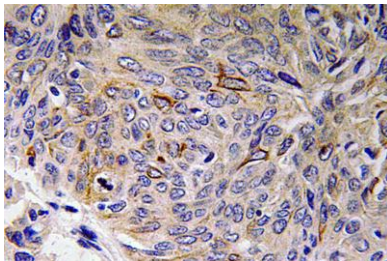
Concentration	1 mg/ml
Observed band	26kD
Human Gene ID	9235
Human Swiss-Prot Number	P24001
Alternative Names	IL32; NK4; TAIF; Interleukin-32; IL-32; Natural killer cells protein 4; Tumor necrosis factor alpha-inducing factor

Background

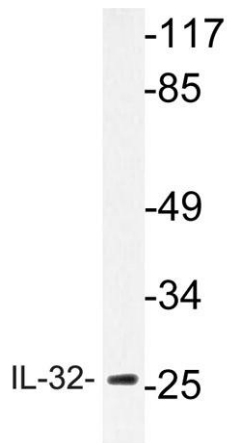
This gene encodes a member of the cytokine family. The protein contains a tyrosine sulfation site, 3 potential N-myristoylation sites, multiple putative phosphorylation sites, and an RGD cell-attachment sequence. Expression of this protein is increased after the activation of T-cells by mitogens or the activation of NK cells by IL-2. This protein induces the production of TNFalpha from macrophage cells. Alternate transcriptional splice variants, encoding different isoforms, have been characterized. [provided by RefSeq, Jul 2008],



Western Blot analysis of various cells using IL-32 Polyclonal Antibody



Immunohistochemistry analysis of IL-32 antibody in paraffin-embedded human lung carcinoma tissue.



Western blot analysis of lysate from HepG2 cells, using IL-32 antibody.