

**IKK $\gamma$  rabbit pAb****Cat#: orb765480 (Manual)**

For research use only. Not intended for diagnostic use.

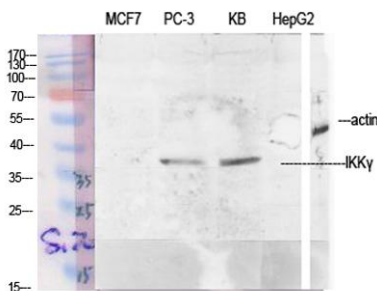
<b>Product Name</b>	IKK $\gamma$ rabbit pAb
<b>Host species</b>	Rabbit
<b>Applications</b>	WB;IHC;IF;ELISA
<b>Species Cross-Reactivity</b>	Human;Rat;Mouse;
<b>Recommended dilutions</b>	Western Blot: 1/500 - 1/2000. Immunohistochemistry: 1/100 - 1/300. Immunofluorescence: 1/200 - 1/1000. ELISA: 1/20000. Not yet tested in other applications.
<b>Immunogen</b>	The antiserum was produced against synthesized peptide derived from human IKK-gamma. AA range:51-100
<b>Specificity</b>	IKK $\gamma$ Polyclonal Antibody detects endogenous levels of IKK $\gamma$ protein.
<b>Formulation</b>	Liquid in PBS containing 50% glycerol, 0.5% BSA and 0.02% sodium azide..
<b>Storage</b>	Store at -20°C. Avoid repeated freeze-thaw cycles.
<b>Protein Name</b>	NF-kappa-B essential modulator
<b>Gene Name</b>	IKBKG
<b>Cellular localization</b>	Cytoplasm . Nucleus . Sumoylated NEMO accumulates in the nucleus in response to genotoxic stress. .
<b>Purification</b>	The antibody was affinity-purified from rabbit antiserum by affinity-chromatography using epitope-specific immunogen.
<b>Clonality</b>	Polyclonal

Explore. Bioreagents.

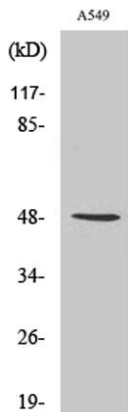
<b>Concentration</b>	1 mg/ml
<b>Observed band</b>	43kD
<b>Human Gene ID</b>	8517
<b>Human Swiss-Prot Number</b>	Q9Y6K9
<b>Alternative Names</b>	IKBK $\gamma$ ; FIP3; NEMO; NF-kappa-B essential modulator; NEMO; FIP-3; I $\kappa$ B kinase-associated protein 1; IKKAP1; Inhibitor of nuclear factor kappa-B kinase subunit gamma; I-kappa-B kinase subunit gamma; IKK-gamma; IKK $\gamma$ ; I $\kappa$ B kinase subunit gamma; NF

**Background**

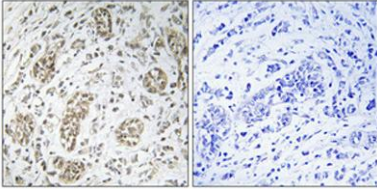
This gene encodes the regulatory subunit of the inhibitor of kappaB kinase (IKK) complex, which activates NF-kappaB resulting in activation of genes involved in inflammation, immunity, cell survival, and other pathways. Mutations in this gene result in incontinentia pigmenti, hypohidrotic ectodermal dysplasia, and several other types of immunodeficiencies. A pseudogene highly similar to this locus is located in an adjacent region of the X chromosome. [provided by RefSeq, Mar 2016],



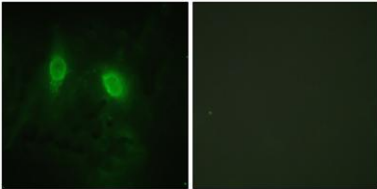
**Western Blot analysis of various cells using IKK $\gamma$  Polyclonal Antibody diluted at 1:1000**



**Western Blot analysis of RAW264.7 cells using IKK $\gamma$  Polyclonal Antibody diluted at 1:1000**



**Immunohistochemical analysis of paraffin-embedded Human breast cancer. Antibody was diluted at 1:100(4° overnight). High-pressure and temperature Tris-EDTA,pH8.0 was used for antigen retrieval. Negative contrl (right) obtaned from antibody was pre-absorbed by immunogen peptide.**



**Immunofluorescence analysis of HeLa cells, using IKK-gamma Antibody. The picture on the right is blocked with the synthesized peptide.**