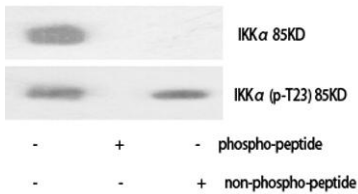


IKK α rabbit pAb**Cat#: orb765475 (Manual)**

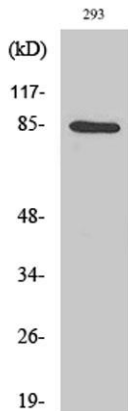
For research use only. Not intended for diagnostic use.

Product Name	IKK α rabbit pAb
Host species	Rabbit
Applications	WB;IHC;IF;ELISA
Species Cross-Reactivity	Human;Mouse;Rat
Recommended dilutions	Western Blot: 1/500 - 1/2000. Immunohistochemistry: 1/100 - 1/300. ELISA: 1/10000. Not yet tested in other applications.
Immunogen	The antiserum was produced against synthesized peptide derived from human IKK-alpha. AA range: 15-64
Specificity	IKK α Polyclonal Antibody detects endogenous levels of IKK α protein.
Formulation	Liquid in PBS containing 50% glycerol, 0.5% BSA and 0.02% sodium azide..
Storage	Store at -20°C. Avoid repeated freeze-thaw cycles.
Protein Name	Inhibitor of nuclear factor kappa-B kinase subunit alpha
Gene Name	CHUK
Cellular localization	Cytoplasm . Nucleus . Shuttles between the cytoplasm and the nucleus.
Purification	The antibody was affinity-purified from rabbit antiserum by affinity-chromatography using epitope-specific immunogen.
Clonality	Polyclonal

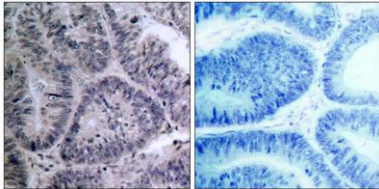
Concentration	1 mg/ml
Observed band	85kD
Human Gene ID	1147
Human Swiss-Prot Number	O15111
Alternative Names	CHUK; IKKA; TCF16; Inhibitor of nuclear factor kappa-B kinase subunit alpha; I-kappa-B kinase alpha; IKK-A; IKK-alpha; IkbKA; IkappaB kinase; Conserved helix-loop-helix ubiquitous kinase; I-kappa-B kinase 1; IKK1; Nuclear factor NF-kappa-B
Background	This gene encodes a member of the serine/threonine protein kinase family. The encoded protein, a component of a cytokine-activated protein complex that is an inhibitor of the essential transcription factor NF-kappa-B complex, phosphorylates sites that trigger the degradation of the inhibitor via the ubiquination pathway, thereby activating the transcription factor. [provided by RefSeq, Jul 2008],



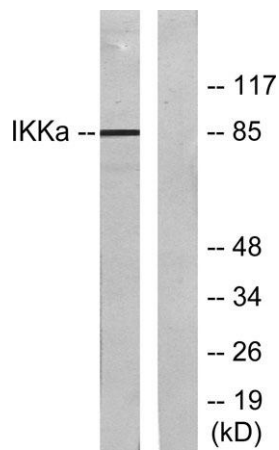
Western Blot analysis of various cells using IKK α Polyclonal Antibody diluted at 1:1000



Western Blot analysis of 293 cells using IKK α Polyclonal Antibody diluted at 1:1000



Immunohistochemistry analysis of paraffin-embedded human colon carcinoma tissue, using IKK-alpha Antibody. The picture on the right is blocked with the synthesized peptide.



Western blot analysis of lysates from 293 cells, treated with EGF, using IKK-alpha Antibody. The lane on the right is blocked with the synthesized peptide.