

**IgA rabbit pAb****Cat#: orb765469 (Manual)**

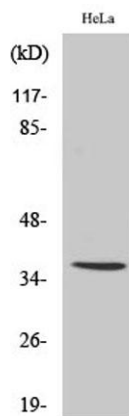
For research use only. Not intended for diagnostic use.

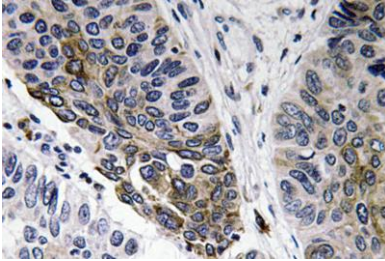
<b>Product Name</b>	IgA rabbit pAb
<b>Host species</b>	Rabbit
<b>Applications</b>	WB;IHC;IF;ELISA
<b>Species Cross-Reactivity</b>	Human;Rat;Mouse;
<b>Recommended dilutions</b>	Western Blot: 1/500 - 1/2000. Immunohistochemistry: 1/100 - 1/300. ELISA: 1/40000. Not yet tested in other applications.
<b>Immunogen</b>	The antiserum was produced against synthesized peptide derived from human IgA. AA range:227-276
<b>Specificity</b>	IgA Polyclonal Antibody detects endogenous levels of IgA protein.
<b>Formulation</b>	Liquid in PBS containing 50% glycerol, 0.5% BSA and 0.02% sodium azide..
<b>Storage</b>	Store at -20°C. Avoid repeated freeze-thaw cycles.
<b>Protein Name</b>	Ig alpha-1 chain C region/Ig alpha-2 chain C region
<b>Gene Name</b>	IGHA1/IGHA2
<b>Cellular localization</b>	Secreted . Cell membrane .
<b>Purification</b>	The antibody was affinity-purified from rabbit antiserum by affinity-chromatography using epitope-specific immunogen.
<b>Clonality</b>	Polyclonal

<b>Concentration</b>	1 mg/ml
<b>Observed band</b>	38kD
<b>Human Gene ID</b>	3493/3494
<b>Human Swiss-Prot Number</b>	P01876/P01877
<b>Alternative Names</b>	IGHA1; Ig alpha-1 chain C region; IGH2; Ig alpha-2 chain C region

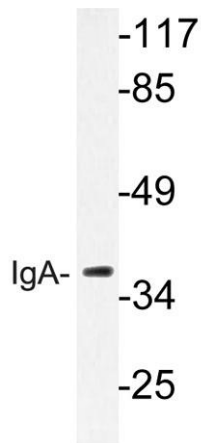
**Background**

disease:A chromosomal aberration involving IGH1 is found in multiple myeloma (MM) cell lines. Translocation t(1;14)(q21;q32) that forms a FCRL4-IGH1 fusion protein.,function:Ig alpha is the major immunoglobulin class in body secretions. It may serve both to defend against local infection and to prevent access of foreign antigens to the general immunologic system.,PTM:3-Hydroxykynurenine, an oxidized tryptophan metabolite that is common in biological fluids, reacts with alpha-1-microglobulin to form heterogeneous polycyclic chromophores including hydroxanthommatin. The chromophore reacts with accessible cysteines forming non-reducible thioether cross-links with Ig alpha-1 chain C region Cys-352.,similarity:Contains 3 Ig-like (immunoglobulin-like) domains.,subunit:Monomeric or polymeric.,

**Western Blot analysis of various cells using IgA Polyclonal Antibody**



**Immunohistochemistry analysis of IgA antibody in paraffin-embedded human lung carcinoma tissue.**



**Western blot analysis of lysate from HeLa cells, using IgA antibody.**