

IFITM3 rabbit pAb**Cat#: orb765467 (Manual)**

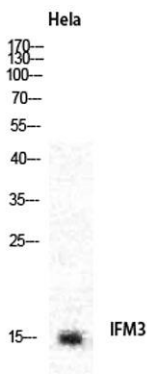
For research use only. Not intended for diagnostic use.

| | |
|---------------------------------|---|
| Product Name | IFITM3 rabbit pAb |
| Host species | Rabbit |
| Applications | WB;IF;ELISA |
| Species Cross-Reactivity | Human;Rat;Mouse; |
| Recommended dilutions | Western Blot: 1/500 - 1/2000. Immunofluorescence: 1/200 - 1/1000. ELISA: 1/40000. Not yet tested in other applications. |
| Immunogen | The antiserum was produced against synthesized peptide derived from human IFM3. AA range:1-50 |
| Specificity | IFITM3 Polyclonal Antibody detects endogenous levels of IFITM3 protein. |
| Formulation | Liquid in PBS containing 50% glycerol, 0.5% BSA and 0.02% sodium azide.. |
| Storage | Store at -20°C. Avoid repeated freeze-thaw cycles. |
| Protein Name | Interferon-induced transmembrane protein 3 |
| Gene Name | IFITM3 |
| Cellular localization | Cell membrane ; Single-pass type II membrane protein . Late endosome membrane ; Single-pass type II membrane protein . Early endosome membrane ; Single-pass type II membrane protein. Lysosome membrane ; Single-pass type II membrane protein . Cytoplasm, perinuclear region . Co-localizes with BRI3 isoform 1 at the perinuclear region. . |
| Purification | The antibody was affinity-purified from rabbit antiserum by affinity-chromatography using epitope-specific immunogen. |

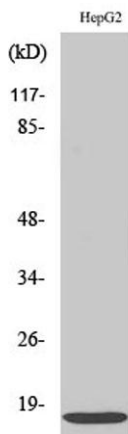
| | |
|--------------------------------|---|
| Clonality | Polyclonal |
| Concentration | 1 mg/ml |
| Observed band | 15kD |
| Human Gene ID | 10410 |
| Human Swiss-Prot Number | Q01628 |
| Alternative Names | IFITM3; Interferon-induced transmembrane protein 3; Dispanin subfamily A member 2b; DSPA2b; Interferon-inducible protein 1-8U |

Background

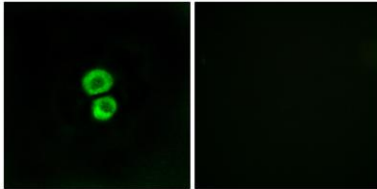
The protein encoded by this gene is an interferon-induced membrane protein that helps confer immunity to influenza A H1N1 virus, West Nile virus, and dengue virus. Two transcript variants, only one of them protein-coding, have been found for this gene. Another variant encoding an N-terminally truncated isoform has been reported, but the full-length nature of this variant has not been determined. [provided by RefSeq, May 2012],



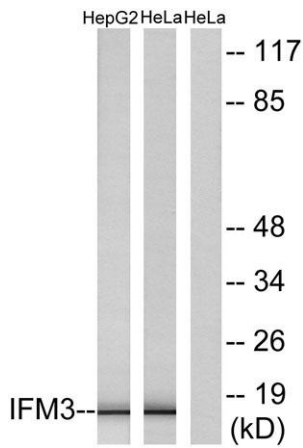
Western Blot analysis of various cells using IFITM3 Polyclonal Antibody diluted at 1:2000



Western Blot analysis of HeLa cells using IFITM3 Polyclonal Antibody diluted at 1:2000



Immunofluorescence analysis of MCF7 cells, using IFM3 Antibody. The picture on the right is blocked with the synthesized peptide.



Western blot analysis of lysates from HepG2 and HeLa cells, using IFM3 Antibody. The lane on the right is blocked with the synthesized peptide.