

HSP70L rabbit pAb**Cat#: orb765450 (Manual)**

For research use only. Not intended for diagnostic use.

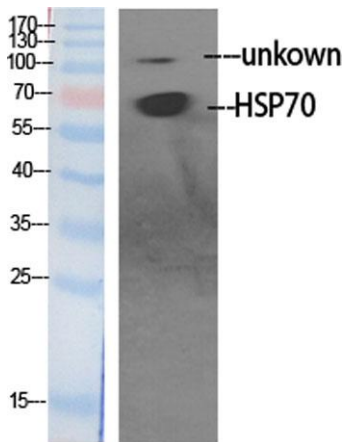
Product Name	HSP70L rabbit pAb
Host species	Rabbit
Applications	WB;IHC;IF;ELISA
Species Cross-Reactivity	Human;Mouse;Rat
Recommended dilutions	Western Blot: 1/500 - 1/2000. Immunohistochemistry: 1/100 - 1/300. ELISA: 1/40000. Not yet tested in other applications.
Immunogen	The antiserum was produced against synthesized peptide derived from human HSPA1L. AA range:221-270
Specificity	HSP70 Polyclonal Antibody detects endogenous levels of HSP70 protein.
Formulation	Liquid in PBS containing 50% glycerol, 0.5% BSA and 0.02% sodium azide..
Storage	Store at -20°C. Avoid repeated freeze-thaw cycles.
Protein Name	Heat shock 70 kDa protein 1-like/Heat shock 70 kDa protein 1A/1B
Gene Name	HSPA1L/HSPA1A
Cellular localization	zona pellucida receptor complex,nucleoplasm,mitochondrial matrix,cytosol,COP9 signalosome,cell body,blood microparticle,
Purification	The antibody was affinity-purified from rabbit antiserum by affinity-chromatography using epitope-specific immunogen.
Clonality	Polyclonal

Explore. Bioreagents.

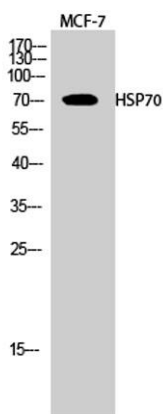
Concentration	1 mg/ml
Observed band	70kD
Human Gene ID	3305/3303/3304
Human Swiss-Prot Number	P34931/P08107
Alternative Names	HSPA1L; Heat shock 70 kDa protein 1-like; Heat shock 70 kDa protein 1L; Heat shock 70 kDa protein 1-Hom; HSP70-Hom; HSPA1A; HSPA1; HSPA1B; Heat shock 70 kDa protein 1A/1B; Heat shock 70 kDa protein 1/2; HSP70-1/HSP70-2; HSP70.1/HSP70.2

Background

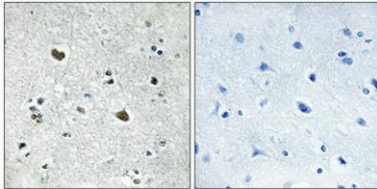
This gene encodes a 70kDa heat shock protein. In conjunction with other heat shock proteins, this protein stabilizes existing proteins against aggregation and mediates the folding of newly translated proteins in the cytosol and in organelles. The gene is located in the major histocompatibility complex class III region, in a cluster with two closely related genes which also encode isoforms of the 70kDa heat shock protein. [provided by RefSeq, Jul 2008],



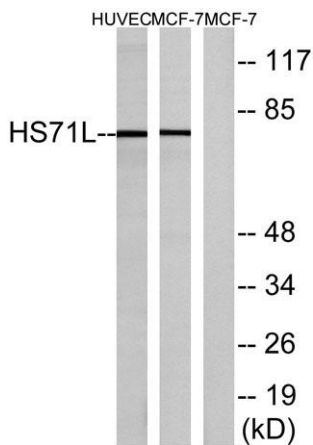
Western Blot analysis of various cells using HSP70 Polyclonal Antibody diluted at 1:1000



Western Blot analysis of MCF-7 cells using HSP70 Polyclonal Antibody diluted at 1:1000



Immunohistochemical analysis of paraffin-embedded Human brain. Antibody was diluted at 1:100(4° overnight). High-pressure and temperature Tris-EDTA,pH8.0 was used for antigen retrieval. Negative contrl (right) obtaned from antibody was pre-absorbed by immunogen peptide.



Western blot analysis of lysates from MCF-7 cells and HUVEC cells, using HS71L Antibody. The lane on the right is blocked with the synthesized peptide.