

HSL rabbit pAb**Cat#: orb765449 (Manual)**

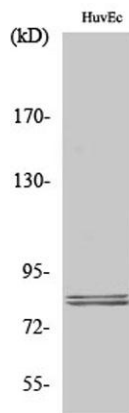
For research use only. Not intended for diagnostic use.

Product Name	HSL rabbit pAb
Host species	Rabbit
Applications	WB;IHC;IF;ELISA
Species Cross-Reactivity	Human;Mouse;Rat
Recommended dilutions	Western Blot: 1/500 - 1/2000. Immunohistochemistry: 1/100 - 1/300. ELISA: 1/5000. Not yet tested in other applications.
Immunogen	The antiserum was produced against synthesized peptide derived from human HSL. AA range:518-567
Specificity	HSL Polyclonal Antibody detects endogenous levels of HSL protein.
Formulation	Liquid in PBS containing 50% glycerol, 0.5% BSA and 0.02% sodium azide..
Storage	Store at -20°C. Avoid repeated freeze-thaw cycles.
Protein Name	Hormone-sensitive lipase
Gene Name	LIPE
Cellular localization	Cell membrane . Membrane, caveola . Cytoplasm, cytosol . Lipid droplet . Found in the high-density caveolae. Translocates to the cytoplasm from the caveolae upon insulin stimulation (PubMed:17026959). Phosphorylation by AMPK reduces its translocation towards the lipid droplets (By similarity). .
Purification	The antibody was affinity-purified from rabbit antiserum by affinity-chromatography using epitope-specific immunogen.

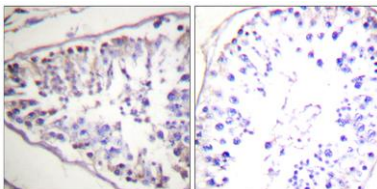
Clonality	Polyclonal
Concentration	1 mg/ml
Observed band	120kD
Human Gene ID	3991
Human Swiss-Prot Number	Q05469
Alternative Names	LIPE; Hormone-sensitive lipase; HSL

Background

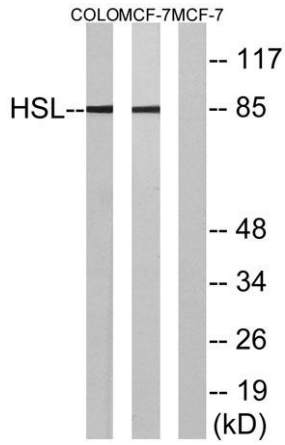
The protein encoded by this gene has a long and a short form, generated by use of alternative translational start codons. The long form is expressed in steroidogenic tissues such as testis, where it converts cholesteryl esters to free cholesterol for steroid hormone production. The short form is expressed in adipose tissue, among others, where it hydrolyzes stored triglycerides to free fatty acids. [provided by RefSeq, Jul 2008].



Western Blot analysis of various cells using HSL Polyclonal Antibody diluted at 1:1000



Immunohistochemistry analysis of paraffin-embedded human tonsil tissue, using HSL Antibody. The picture on the right is blocked with the synthesized peptide.



Western blot analysis of lysates from COLO and MCF7 cells, using HSL Antibody. The lane on the right is blocked with the synthesized peptide.