

Hrs rabbit pAb**Cat#: orb765442 (Manual)**

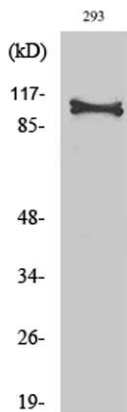
For research use only. Not intended for diagnostic use.

Product Name	Hrs rabbit pAb
Host species	Rabbit
Applications	WB;IHC;IF;ELISA
Species Cross-Reactivity	Human;Mouse;Rat
Recommended dilutions	Western Blot: 1/500 - 1/2000. Immunohistochemistry: 1/100 - 1/300. Immunofluorescence: 1/200 - 1/1000. ELISA: 1/20000. Not yet tested in other applications.
Immunogen	The antiserum was produced against synthesized peptide derived from human HRS. AA range:301-350
Specificity	Hrs Polyclonal Antibody detects endogenous levels of Hrs protein.
Formulation	Liquid in PBS containing 50% glycerol, 0.5% BSA and 0.02% sodium azide..
Storage	Store at -20°C. Avoid repeated freeze-thaw cycles.
Protein Name	Hepatocyte growth factor-regulated tyrosine kinase substrate
Gene Name	HGS
Cellular localization	Cytoplasm . Early endosome membrane ; Peripheral membrane protein ; Cytoplasmic side . Endosome, multivesicular body membrane ; Peripheral membrane protein . Colocalizes with UBQLN1 in ubiquitin-rich cytoplasmic aggregates that are not endocytic compartments. .
Purification	The antibody was affinity-purified from rabbit antiserum by affinity-chromatography using epitope-specific immunogen.

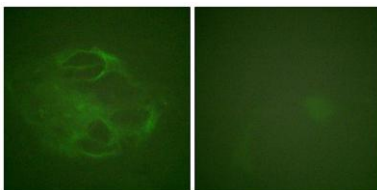
Clonality	Polyclonal
Concentration	1 mg/ml
Observed band	80kD
Human Gene ID	9146
Human Swiss-Prot Number	O14964
Alternative Names	HGS; HRS; Hepatocyte growth factor-regulated tyrosine kinase substrate; Hrs; Protein pp110

Background

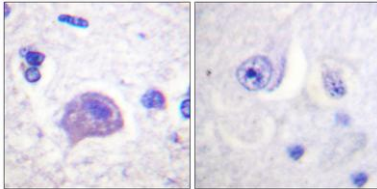
The protein encoded by this gene regulates endosomal sorting and plays a critical role in the recycling and degradation of membrane receptors. The encoded protein sorts monoubiquitinated membrane proteins into the multivesicular body, targeting these proteins for lysosome-dependent degradation. [provided by RefSeq, Dec 2010],



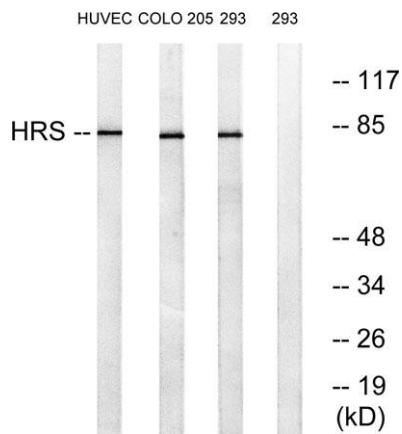
Western Blot analysis of various cells using Hrs Polyclonal Antibody diluted at 1:500



Immunofluorescence analysis of HeLa cells, using HRS Antibody. The picture on the right is blocked with the synthesized peptide.



Immunohistochemistry analysis of paraffin-embedded human brain tissue, using HRS Antibody. The picture on the right is blocked with the synthesized peptide.



Western blot analysis of lysates from 293, COLO, and HUVEC cells, using HRS Antibody. The lane on the right is blocked with the synthesized peptide.