

HRF rabbit pAb**Cat#: orb765440 (Manual)**

For research use only. Not intended for diagnostic use.

Product Name	HRF rabbit pAb
Host species	Rabbit
Applications	WB;IHC;IF;ELISA
Species Cross-Reactivity	Human;Mouse;Rat
Recommended dilutions	Western Blot: 1/500 - 1/2000. Immunohistochemistry: 1/100 - 1/300. Immunofluorescence: 1/200 - 1/1000. ELISA: 1/20000. Not yet tested in other applications.
Immunogen	The antiserum was produced against synthesized peptide derived from human TCTP. AA range:71-120
Specificity	HRF Polyclonal Antibody detects endogenous levels of HRF protein.
Formulation	Liquid in PBS containing 50% glycerol, 0.5% BSA and 0.02% sodium azide..
Storage	Store at -20°C. Avoid repeated freeze-thaw cycles.
Protein Name	Translationally-controlled tumor protein
Gene Name	TPT1
Cellular localization	Cytoplasm .
Purification	The antibody was affinity-purified from rabbit antiserum by affinity-chromatography using epitope-specific immunogen.
Clonality	Polyclonal

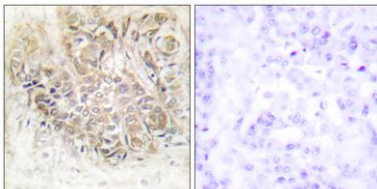
Concentration	1 mg/ml
Observed band	24kD
Human Gene ID	7178
Human Swiss-Prot Number	P13693
Alternative Names	TPT1; Translationally-controlled tumor protein; TCTP; Fortilin; Histamine-releasing factor; HRF; p23

Background

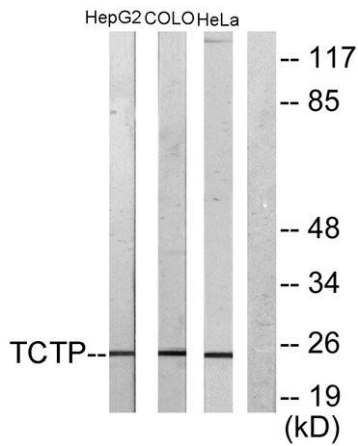
function:Involved in calcium binding and microtubule stabilization.,similarity:Belongs to the TCTP family.,subunit:Interacts with STEAP3.,tissue specificity:Found in several healthy and tumoral cells including erythrocytes, hepatocytes, macrophages, platelets, keratinocytes, erythroleukemia cells, gliomas, melanomas, hepatoblastomas, and lymphomas. It cannot be detected in kidney and renal cell carcinoma (RCC). Expressed in placenta and prostate.,



Western Blot analysis of various cells using HRF Polyclonal Antibody



Immunohistochemistry analysis of paraffin-embedded human breast carcinoma tissue, using TCTP Antibody. The picture on the right is blocked with the synthesized peptide.



Western blot analysis of lysates from HepG2 and COLO205/HeLa cells, using TCTP Antibody. The lane on the right is blocked with the synthesized peptide.