

**hnRNP G rabbit pAb****Cat#: orb765424 (Manual)**

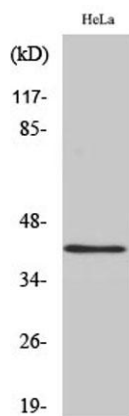
For research use only. Not intended for diagnostic use.

<b>Product Name</b>	hnRNP G rabbit pAb
<b>Host species</b>	Rabbit
<b>Applications</b>	WB;IHC;IF;ELISA
<b>Species Cross-Reactivity</b>	Human;Mouse;Rat
<b>Recommended dilutions</b>	Western Blot: 1/500 - 1/2000. Immunohistochemistry: 1/100 - 1/300. Immunofluorescence: 1/200 - 1/1000. ELISA: 1/40000. Not yet tested in other applications.
<b>Immunogen</b>	The antiserum was produced against synthesized peptide derived from human hnRNP G. AA range:6-55
<b>Specificity</b>	hnRNP G Polyclonal Antibody detects endogenous levels of hnRNP G protein.
<b>Formulation</b>	Liquid in PBS containing 50% glycerol, 0.5% BSA and 0.02% sodium azide..
<b>Storage</b>	Store at -20°C. Avoid repeated freeze-thaw cycles.
<b>Protein Name</b>	RNA-binding motif protein X chromosome
<b>Gene Name</b>	RBMX
<b>Cellular localization</b>	Nucleus . Component of ribonucleosomes. Localizes in numerous small granules in the nucleus.
<b>Purification</b>	The antibody was affinity-purified from rabbit antiserum by affinity-chromatography using epitope-specific immunogen.
<b>Clonality</b>	Polyclonal

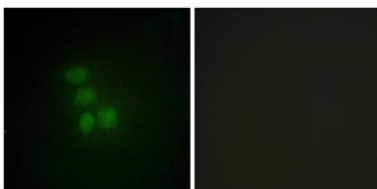
<b>Concentration</b>	1 mg/ml
<b>Observed band</b>	40kD
<b>Human Gene ID</b>	27316
<b>Human Swiss-Prot Number</b>	P38159
<b>Alternative Names</b>	RBMX; HNRPG; RBMXP1; RNA-binding motif protein; X chromosome; Glycoprotein p43; Heterogeneous nuclear ribonucleoprotein G; hnRNP G

**Background**

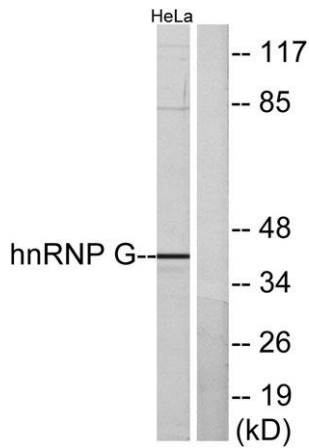
This gene belongs to the RBMY gene family which includes candidate Y chromosome spermatogenesis genes. This gene, an active X chromosome homolog of the Y chromosome RBMY gene, is widely expressed whereas the RBMY gene evolved a male-specific function in spermatogenesis. Pseudogenes of this gene, found on chromosomes 1, 4, 9, 11, and 6, were likely derived by retrotransposition from the original gene. Alternatively spliced transcript variants encoding different isoforms have been identified. A snoRNA gene (SNORD61) is found in one of its introns. [provided by RefSeq, Sep 2009],



**Western Blot analysis of various cells using hnRNP G Polyclonal Antibody cells nucleus extracted by Minute TM Cytoplasmic and Nuclear Fractionation kit (SC-003, Invent biotech, MN, USA).**



**Immunofluorescence analysis of HepG2 cells, using hnRNP G Antibody. The picture on the right is blocked with the synthesized peptide.**



Western blot analysis of lysates from HeLa cells, using hnRNP G Antibody. The lane on the right is blocked with the synthesized peptide.



Immunohistochemical analysis of paraffin-embedded human tonsil. 1, Tris-EDTA, pH 9.0 was used for antigen retrieval. 2 Antibody was diluted at 1:200 (4°C overnight). 3, Secondary antibody was diluted at 1:200 (room temperature, 45 min).