

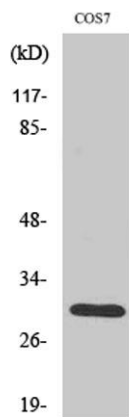
HCCS rabbit pAb**Cat#: orb765371 (Manual)**

For research use only. Not intended for diagnostic use.

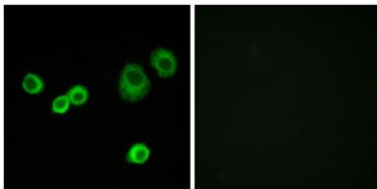
Product Name	HCCS rabbit pAb
Host species	Rabbit
Applications	WB;IHC;IF;ELISA
Species Cross-Reactivity	Human;Mouse;Monkey
Recommended dilutions	Western Blot: 1/500 - 1/2000. Immunohistochemistry: 1/100 - 1/300. Immunofluorescence: 1/200 - 1/1000. ELISA: 1/20000. Not yet tested in other applications.
Immunogen	The antiserum was produced against synthesized peptide derived from human Cytochrome c-type Heme Lyase. AA range:81-130
Specificity	HCCS Polyclonal Antibody detects endogenous levels of HCCS protein.
Formulation	Liquid in PBS containing 50% glycerol, 0.5% BSA and 0.02% sodium azide..
Storage	Store at -20°C. Avoid repeated freeze-thaw cycles.
Protein Name	Cytochrome c-type heme lyase
Gene Name	HCCS
Cellular localization	Mitochondrion inner membrane . Membrane ; Lipid-anchor .
Purification	The antibody was affinity-purified from rabbit antiserum by affinity-chromatography using epitope-specific immunogen.
Clonality	Polyclonal

Concentration	1 mg/ml
Observed band	31kD
Human Gene ID	3052
Human Swiss-Prot Number	P53701
Alternative Names	HCCS; CCHL; Cytochrome c-type heme lyase; CCHL; Holocytochrome c-type synthase

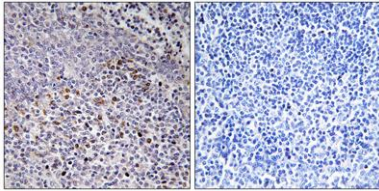
Background holocytochrome c synthase(HCCS) Homo sapiens The protein encoded by this gene is an enzyme that covalently links a heme group to the apoprotein of cytochrome c. Defects in this gene are a cause of microphthalmia syndromic type 7 (MCOPS7). Three transcript variants encoding the same protein have been found for this gene. [provided by RefSeq, Jan 2010],



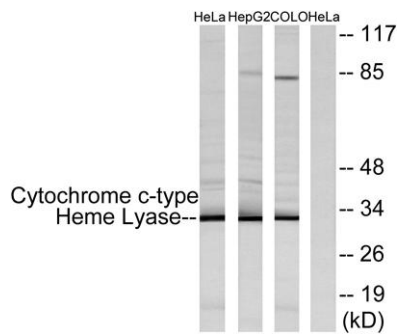
Western Blot analysis of various cells using HCCS Polyclonal Antibody diluted at 1:2000



Immunofluorescence analysis of MCF7 cells, using Cytochrome c-type Heme Lyase Antibody. The picture on the right is blocked with the synthesized peptide.



Immunohistochemistry analysis of paraffin-embedded human tonsil tissue, using Cytochrome c-type Heme Lyase Antibody. The picture on the right is blocked with the synthesized peptide.



Western blot analysis of lysates from HeLa, HepG2, and COLO cells, using Cytochrome c-type Heme Lyase Antibody. The lane on the right is blocked with the synthesized peptide.