

GSK3 α rabbit pAb**Cat#: orb765360 (Manual)**

For research use only. Not intended for diagnostic use.

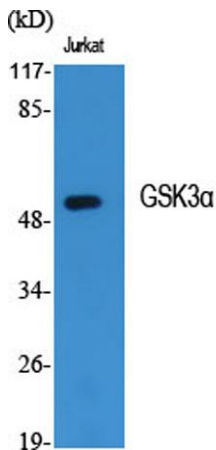
Product Name	GSK3 α rabbit pAb
Host species	Rabbit
Applications	WB;IHC;IF;IP;ELISA
Species Cross-Reactivity	Human;Mouse;Rat
Recommended dilutions	Western Blot: 1/500 - 1/2000. Immunohistochemistry: 1/100 - 1/300. Immunoprecipitation: 2-5 ug/mg lysate. ELISA: 1/20000. Not yet tested in other applications.
Immunogen	The antiserum was produced against synthesized peptide derived from human GSK3A. AA range:10-59
Specificity	GSK3 α Polyclonal Antibody detects endogenous levels of GSK3 α protein.
Formulation	Liquid in PBS containing 50% glycerol, 0.5% BSA and 0.02% sodium azide..
Storage	Store at -20°C. Avoid repeated freeze-thaw cycles.
Protein Name	Glycogen synthase kinase-3 alpha
Gene Name	GSK3A
Cellular localization	mitochondrion,cytosol,beta-catenin destruction complex,postsynapse,
Purification	The antibody was affinity-purified from rabbit antiserum by affinity-chromatography using epitope-specific immunogen.
Clonality	Polyclonal

Explore. Bioreagents.

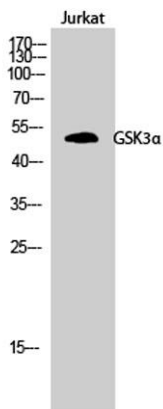
Concentration	1 mg/ml
Observed band	51kD
Human Gene ID	2931
Human Swiss-Prot Number	P49840
Alternative Names	GSK3A; Glycogen synthase kinase-3 alpha; GSK-3 alpha; Serine/threonine-protein kinase GSK3A

Background

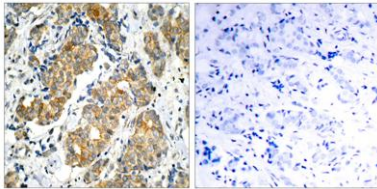
glycogen synthase kinase 3 alpha(GSK3A) Homo sapiens This gene encodes a multifunctional Ser/Thr protein kinase that is implicated in the control of several regulatory proteins including glycogen synthase, and transcription factors, such as JUN. It also plays a role in the WNT and PI3K signaling pathways, as well as regulates the production of beta-amyloid peptides associated with Alzheimer's disease. [provided by RefSeq, Oct 2011],



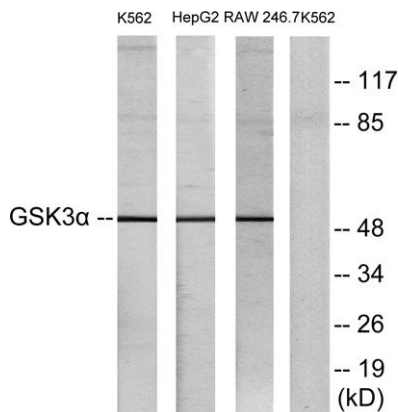
Western Blot analysis of various cells using GSK3α Polyclonal Antibody



Western Blot analysis of Jurkat cells using GSK3α Polyclonal Antibody



Immunohistochemistry analysis of paraffin-embedded human breast carcinoma, using GSK3 alpha Antibody. The picture on the right is blocked with the synthesized peptide.



Western blot analysis of lysates from K562, HepG2, and RAW264.7 cells, using GSK3 alpha Antibody. The lane on the right is blocked with the synthesized peptide.