

GRK 3 rabbit pAb**Cat#: orb765354 (Manual)**

For research use only. Not intended for diagnostic use.

Product Name	GRK 3 rabbit pAb
Host species	Rabbit
Applications	WB;IHC;IF;ELISA
Species Cross-Reactivity	Human;Mouse;Rat
Recommended dilutions	Western Blot: 1/500 - 1/2000. Immunohistochemistry: 1/100 - 1/300. ELISA: 1/20000. Not yet tested in other applications.
Immunogen	The antiserum was produced against synthesized peptide derived from human GRK3. AA range:361-410
Specificity	GRK 3 Polyclonal Antibody detects endogenous levels of GRK 3 protein.
Formulation	Liquid in PBS containing 50% glycerol, 0.5% BSA and 0.02% sodium azide..
Storage	Store at -20°C. Avoid repeated freeze-thaw cycles.
Protein Name	Beta-adrenergic receptor kinase 2
Gene Name	ADRBK2
Cellular localization	Cell junction, synapse, postsynapse . Cell junction, synapse, presynapse .
Purification	The antibody was affinity-purified from rabbit antiserum by affinity-chromatography using epitope-specific immunogen.
Clonality	Polyclonal

Explore. Bioreagents.

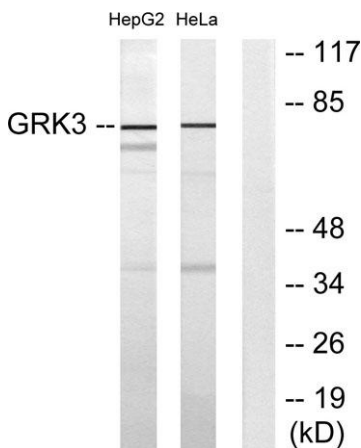
Concentration	1 mg/ml
Observed band	80kD
Human Gene ID	157
Human Swiss-Prot Number	P35626
Alternative Names	ADRBK2; BARK2; GRK3; Beta-adrenergic receptor kinase 2; Beta-ARK-2; G-protein-coupled receptor kinase 3

Background

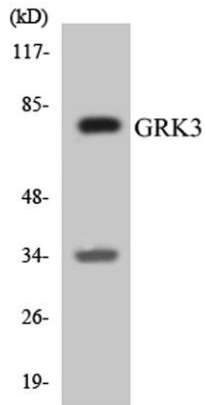
The beta-adrenergic receptor kinase specifically phosphorylates the agonist-occupied form of the beta-adrenergic and related G protein-coupled receptors. Overall, the beta adrenergic receptor kinase 2 has 85% amino acid similarity with beta adrenergic receptor kinase 1, with the protein kinase catalytic domain having 95% similarity. These data suggest the existence of a family of receptor kinases which may serve broadly to regulate receptor function. [provided by RefSeq, Jul 2008],



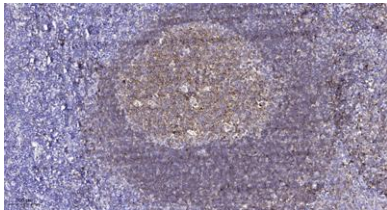
Western Blot analysis of various cells using GRK 3 Polyclonal Antibody diluted at 1:500



Western blot analysis of lysates from HepG2 and HeLa cells, using GRK3 Antibody. The lane on the right is blocked with the synthesized peptide.



Western blot analysis of the lysates from K562 cells using GRK3 antibody.



Immunohistochemical analysis of paraffin-embedded human tonsil. 1, Antibody was diluted at 1:200(4° overnight). 2, Tris-EDTA,pH9.0 was used for antigen retrieval. 3,Secondary antibody was diluted at 1:200(room temperature, 45min).